



## PROPERTY OVERVIEW

### Location:

445 Crowne Point Road  
West Deptford, NJ

### Size:

1859+/- SF on .45 Acres

### Sale Price:

\$289,000

### Tax I.D.:

Block 252, Lot 1

### Property Specifications

- Free standing Office/Retail space with service bay area.
- Close proximity to I-295
- Large fenced in lot for storage
- Highly visible signage
- Zoning: Commercial
- Real Estate Taxes: \$9,129.00 (2014)
- 8 parking spots plus large lot

### Demographics

	1 MILE	3 MILE	5 MILE
TOTAL POPULATION	3,959	44,211	117,058
TOTAL HOUSEHOLDS	1,602	17,686	46,715
MEDIAN HOUSE-HOLD INCOME	\$65,691	\$64,364	\$63,094

### Seth Hersh

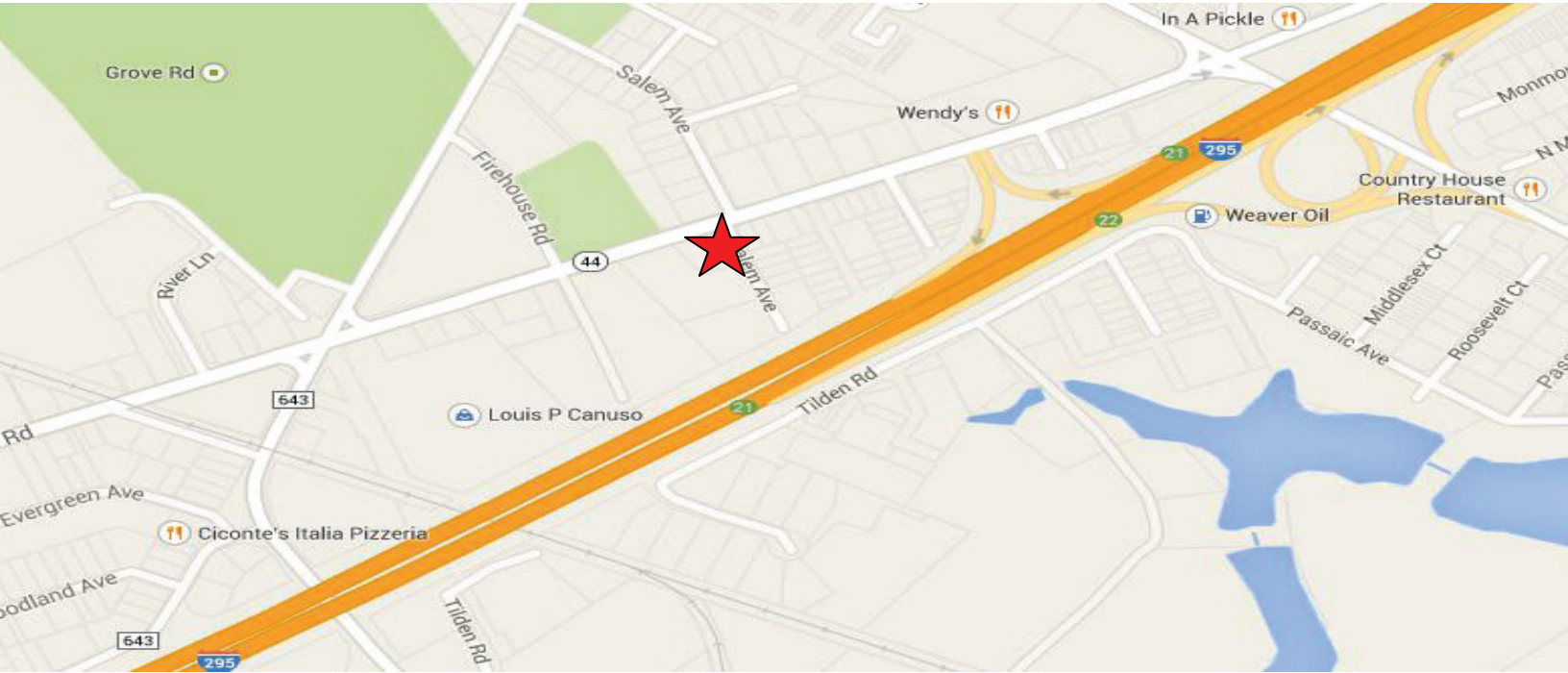
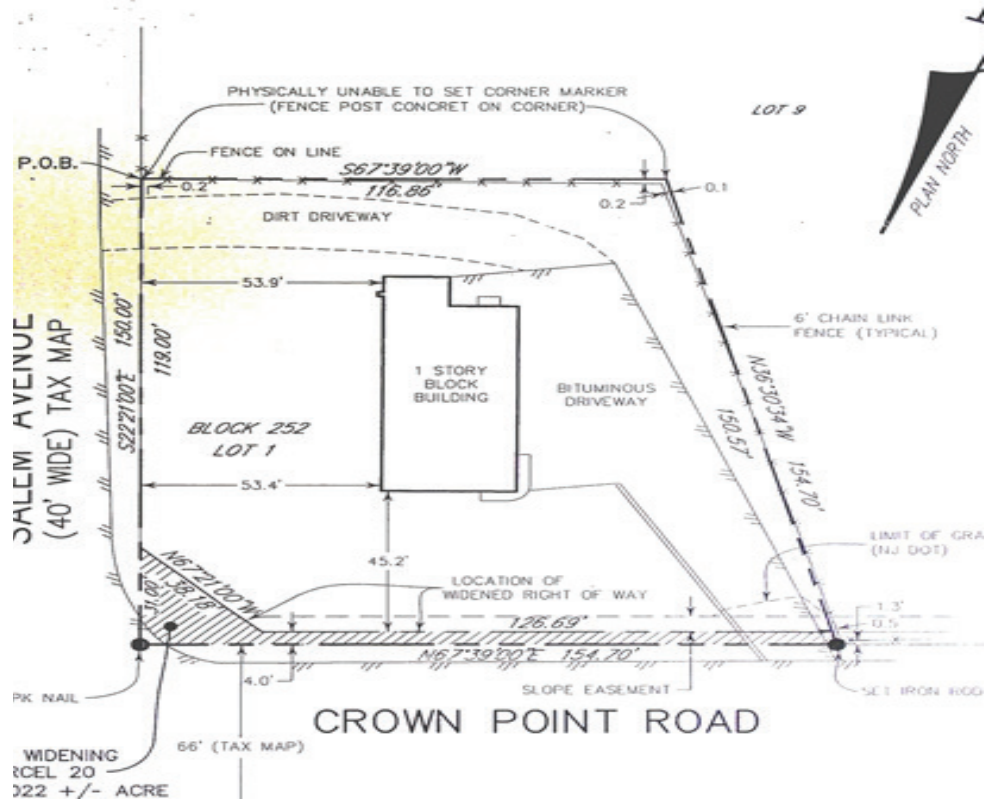
856-324-5192  
shersh@markeim.com

### Markeim Chalmers, Inc

1415 Route 70 E Ste 500  
Cherry Hill, NJ 08034  
856-354-9700  
www.markeim.com

# 445 CROWNE POINT ROAD WEST DEPTFORD, NJ

**FREE  
STANDING  
BUILDING  
FOR SALE**



**Seth Hersh**  
856-324-5192  
shersh@markeim.com

**Markeim Chalmers, Inc**  
1415 Route 70 E Ste 500  
Cherry Hill, NJ 08034  
856-354-9700  
www.markeim.com