



## PROPERTY OVERVIEW

### Location:

1991 East Route 70  
Cherry Hill, NJ

### Size:

4.74+/- Acres for Development

### Sale Price:

Call for details

### Tax I.D.:

Block 471.01, Lot 7

## Property Specifications

- Zoning B2 and R1
- Prime acreage for development located on heavily traveled Route 70
- Surrounded by heavy commercial users as well as dense residential neighborhoods.
- Real Estate Taxes: \$45,023 (2014)

## Demographics

	1 MILE	3 MILE	5 MILE
TOTAL POPULATION	10,533	80,257	204,456
TOTAL HOUSEHOLDS	3,864	30,224	80,457
MEDIAN HOUSEHOLD INCOME	\$97,902	\$93,738	\$81,866

### Seth Hersh

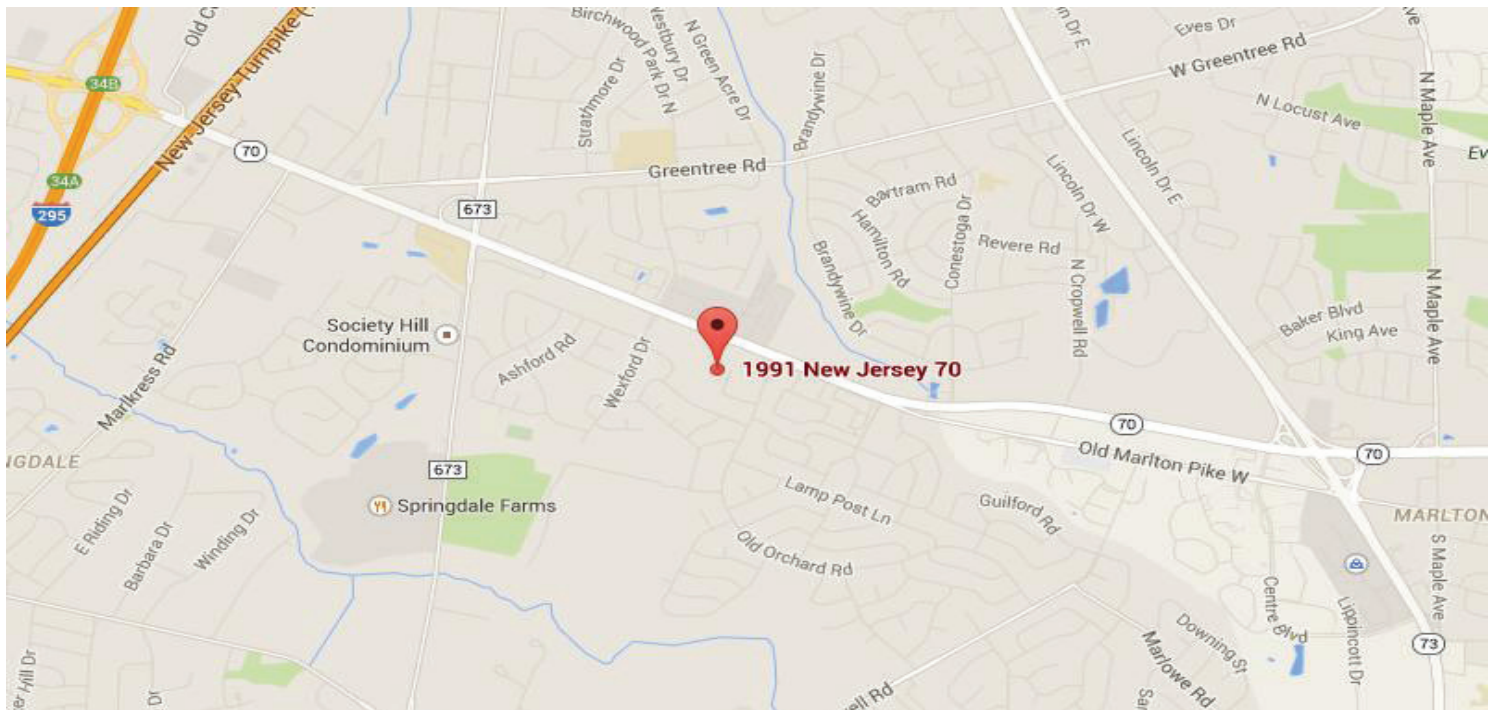
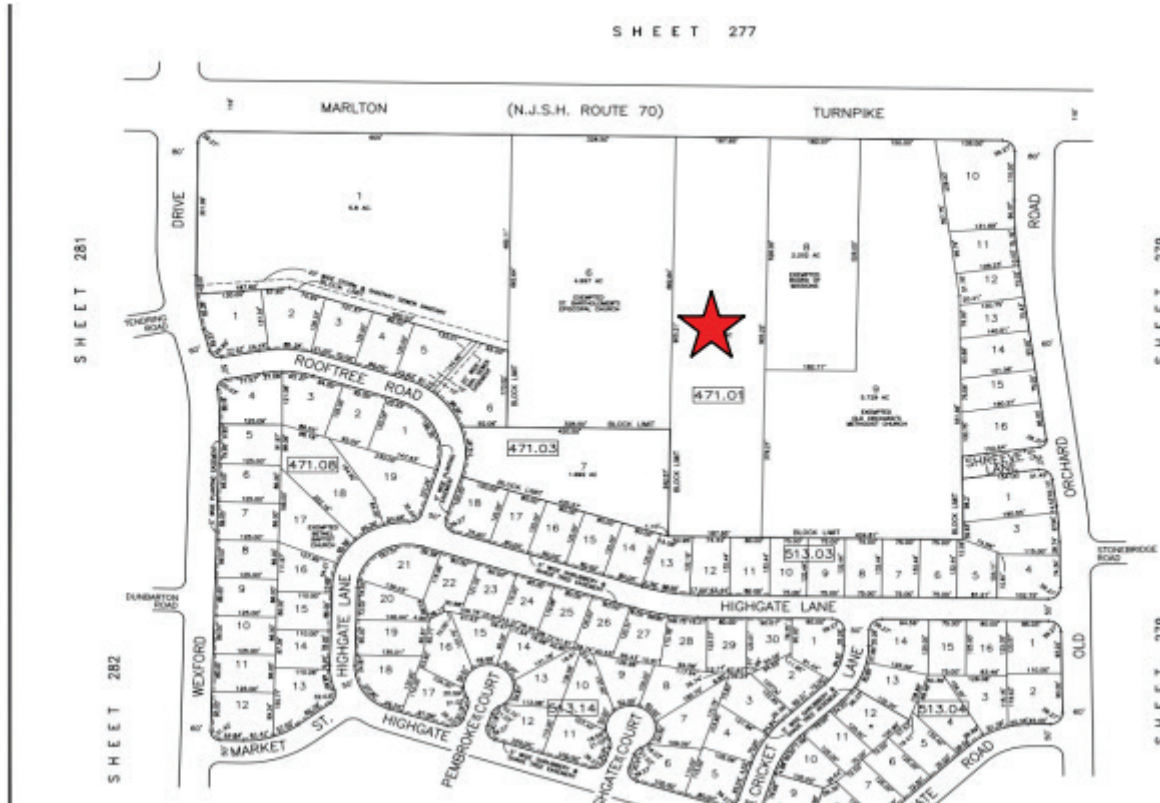
856-324-5192  
shersh@markeim.com

### Markeim Chalmers, Inc

1415 Route 70 E Ste 500  
Cherry Hill, NJ 08034  
856-354-9700  
www.markeim.com

# 1991 EAST ROUTE 70 CHERRY HILL, NJ

4.74+/- ACRES  
FOR  
DEVELOPMENT



**Seth Hersh**  
856-324-5192  
shersh@markeim.com

**Markeim Chalmers, Inc**  
1415 Route 70 E Ste 500  
Cherry Hill, NJ 08034  
856-354-9700  
www.markeim.com