



PROPERTY OVERVIEW

Location:

Offices at South Crossing
Brick Rd & Lippincott Dr
Marlton, NJ

Size:

~~Suite 544: 1,800 SF~~ **Leased**
Suite 562: 1,630 SF

Rental Rate:

\$22.00 + Utilities + Janitorial
Base Year Operating Expenses

Property Specifications

Property Type	Medical/Office
Parking	5/1000

Property Features

**Just off Route 73 across from The
Promenade Shopping Plaza**

**Ideal for any professional or medical
office use.**

Kevin Burns

856-324-5191
kburns@markeim.com

Markeim Chalmers, Inc

1415 Route 70 E Ste 500
Cherry Hill, NJ 08034
856-354-9700
www.markeim.com



**MARKEIM
CHALMERS INC**

COMMERCIAL REAL ESTATE

856-354-9700

OFFICES AT SOUTH CROSSING
BRICK RD & LIPPINCOTT DR,
MARLTON NJ

**OFFICE
SPACE
FOR LEASE**



Kevin Burns

856-324-5191

kburns@markeim.com

Markeim Chalmers, Inc

1415 Route 70 E Ste 500

Cherry Hill, NJ 08034

856-354-9700

www.markeim.com

Subject to errors omissions, change and withdrawl without further notice.

SOUTH CROSSING
BRICK RD. &
LIPPINCOTT DR.
MARLTON, NJ

DETAILED CAD
FLOOR PLANS



ROOMINDERS

MARKETING
SPACE PLANNING

APPROXIMATE
SQUARE FEET

P 856.429.4233

WEB - WWW.ROOMINDERS.COM

F 856.429.8118

E JON@ROOMINDERS.COM

DRAWN BY JON HITCHNER 9.14.2020

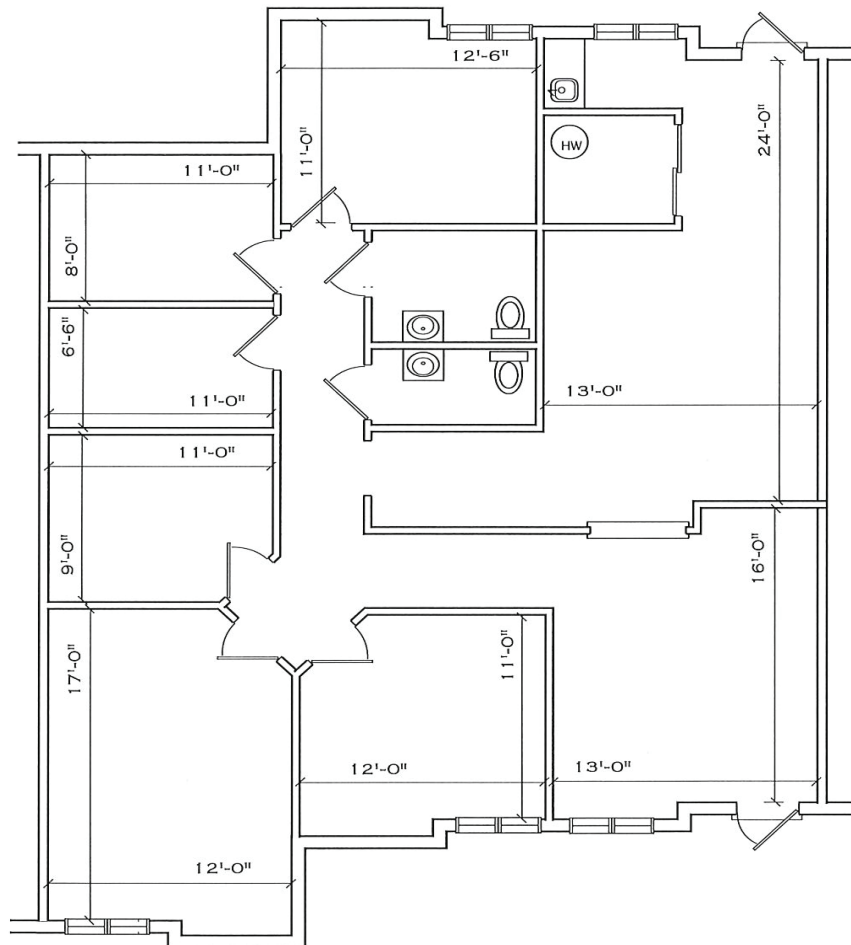
REVISED -

* ACTUAL MEASUREMENTS MAY VARY

* NOT TO BE USED FOR CONSTRUCTION PURPOSES

* POSITION OF WALLS AND FIXTURES ARE APPROXIMATE

* ONLY TO BE USED WITH WRITTEN PERMISSION



SUITE 562
1,630 SQ. FT.

Kevin Burns

856-324-5191

kburns@markeim.com

Markeim Chalmers, Inc

1415 Route 70 E Ste 500

Cherry Hill, NJ 08034

856-354-9700

www.markeim.com