

**26-28 S. CENTRE ST**  
**MERCHANTVILLE, NJ**

**OFFICE/  
RETAIL  
FOR LEASE**



## PROPERTY OVERVIEW

### Location:

26-28 S. Centre Street  
Merchantville, NJ

### Size:

10,500+/- SF can be Subdivided  
Basement - 3,000+/- SF

### Lease Price:

\$9.75/SF NNN

## Property Specifications

Tax I.D.

Block 22, Lot 27

Zoning

B-1 Central Business

## Property Features

Located in the Central Business District

Current use is General Office

Walking distance to shopping,  
restaurants, banking, etc.

Zoning allows retail, office, restaurants.

**Kevin Burns**

856-324-5191

kburns@markeim.com

**Markeim Chalmers, Inc**

1415 Route 70 E Ste 500

Cherry Hill, NJ 08034

856-354-9700

www.markeim.com

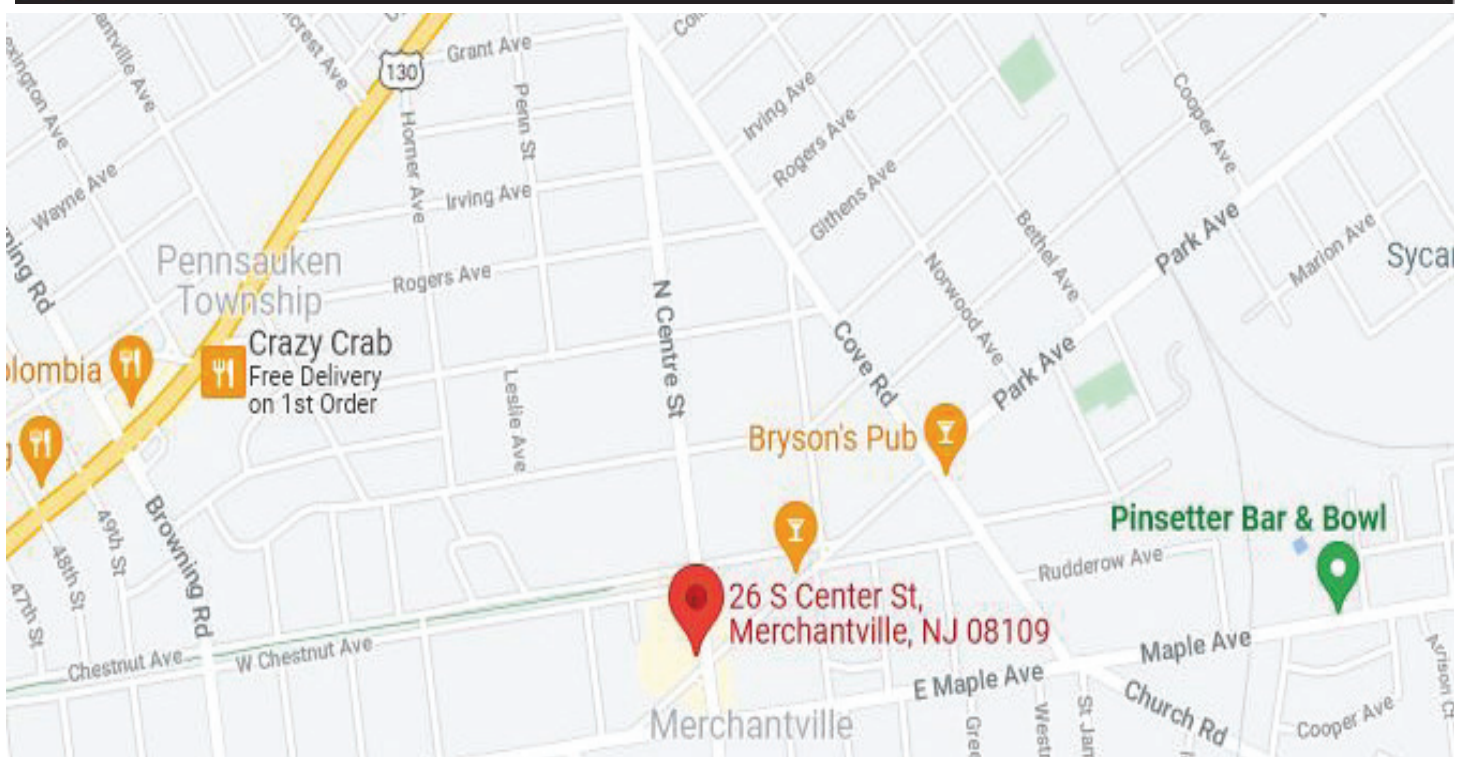
**26-28 S. CENTRE ST**  
**MERCHANTVILLE, NJ**

**OFFICE/  
RETAIL  
FOR LEASE**



**MERCHANTVILLE PEDESTRIAN STREET**  
BOROUGH OF MERCHANTVILLE, CAMDEN COUNTY, NJ

PRESENTED BY: **OME**  
ASSOCIATES



**Kevin Burns**

856-324-5191

kburns@markeim.com

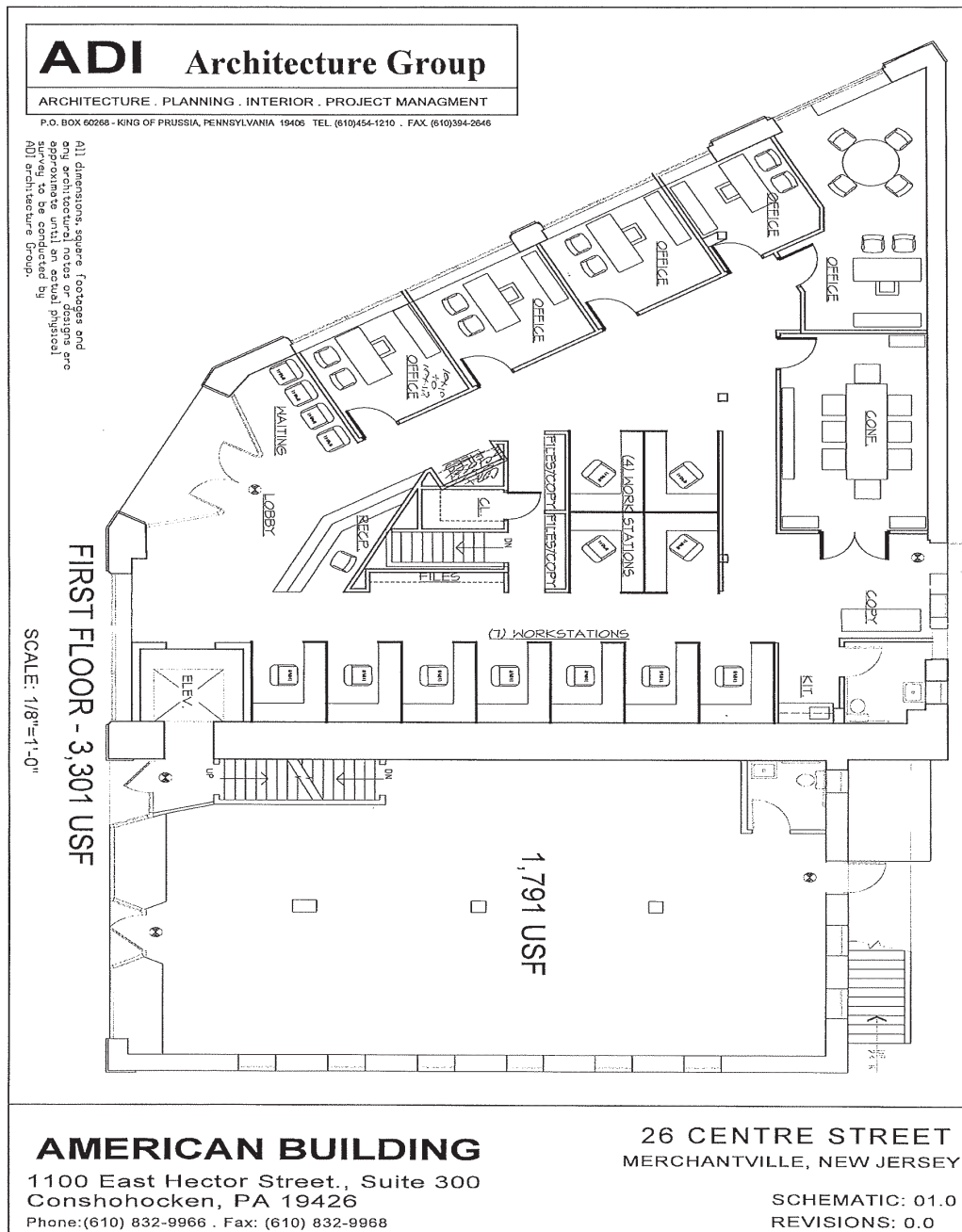
**Markeim Chalmers, Inc**

1415 Route 70 E Ste 500

Cherry Hill, NJ 08034

856-354-9700

www.markeim.com



**Kevin Burns**

856-324-5191

kburns@markeim.com

**Markeim Chalmers, Inc**

1415 Route 70 E Ste 500

Cherry Hill, NJ 08034

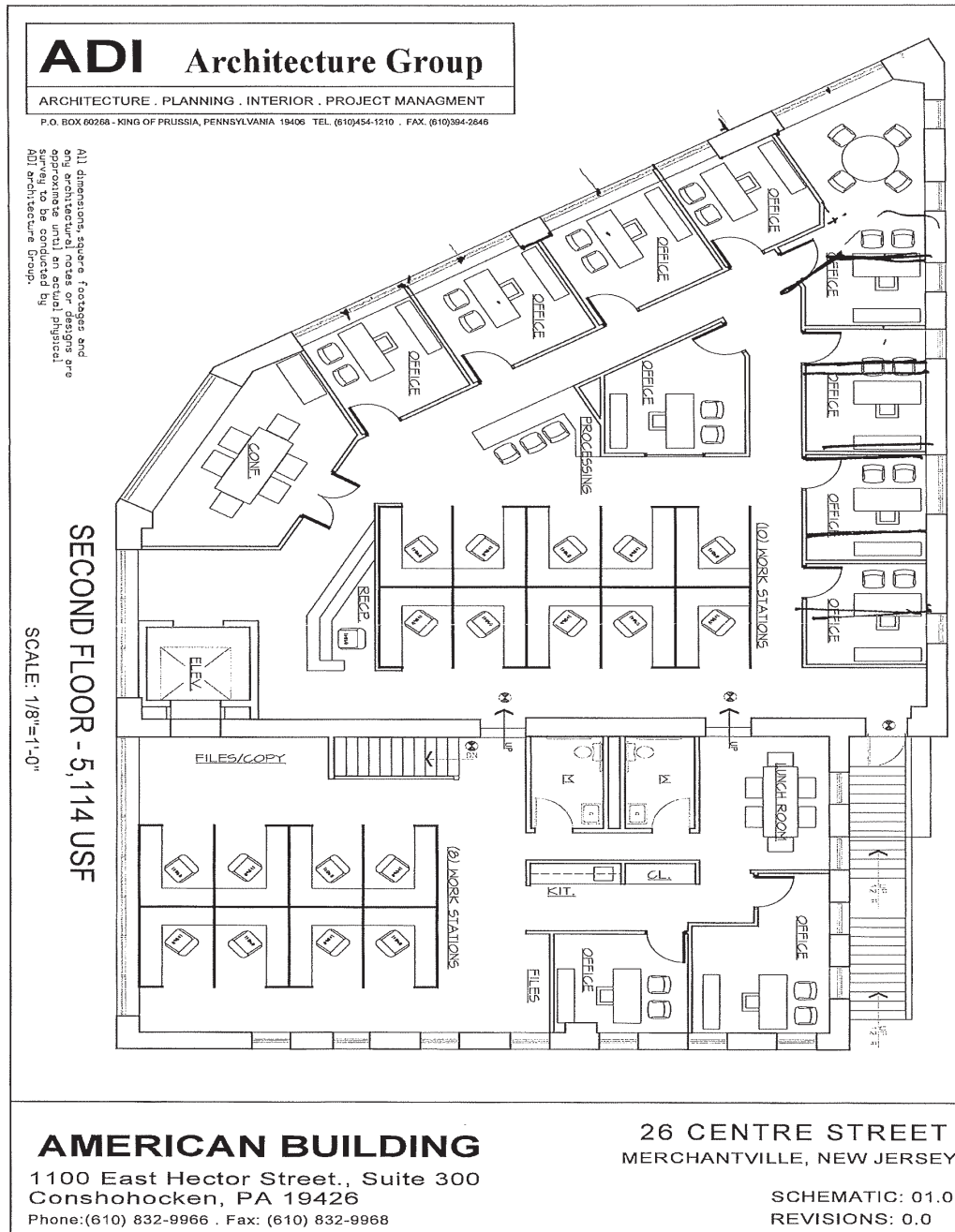
856-354-9700

www.markeim.com



**26-28 S. CENTRE ST**  
**MERCHANTVILLE, NJ**

**OFFICE/  
RETAIL  
FOR LEASE**



**Kevin Burns**

856-324-5191

kburns@markeim.com

**Markeim Chalmers, Inc**

1415 Route 70 E Ste 500

Cherry Hill, NJ 08034

856-354-9700

www.markeim.com