



## PROPERTY OVERVIEW

### Location:

Pavilions of Voorhees  
2301 Evesham Rd  
Units 701 & 702  
Voorhees, NJ

### Size:

2,530 SF 1st Floor  
1,210 SF Finished Lower Level  
1,208 SF Unfinished Lower Level

### Sale Price:

\$500,000

### Lease Price:

\$20.00/SF plus utilities

## Property Specifications

Property Type:	Office/Medical
Tax I.D.:	Block 202.26 Lots 1.04, C701 & C702
Taxes:	\$13,427
Condo Fees	\$9,489

## Property Features

Rare double unit with finished basement

Abundant parking

Directory and suite signage available

Ideal for all office or medical use

**Kevin Burns**

856-324-5191

kburns@markeim.com

**Markeim Chalmers, Inc**

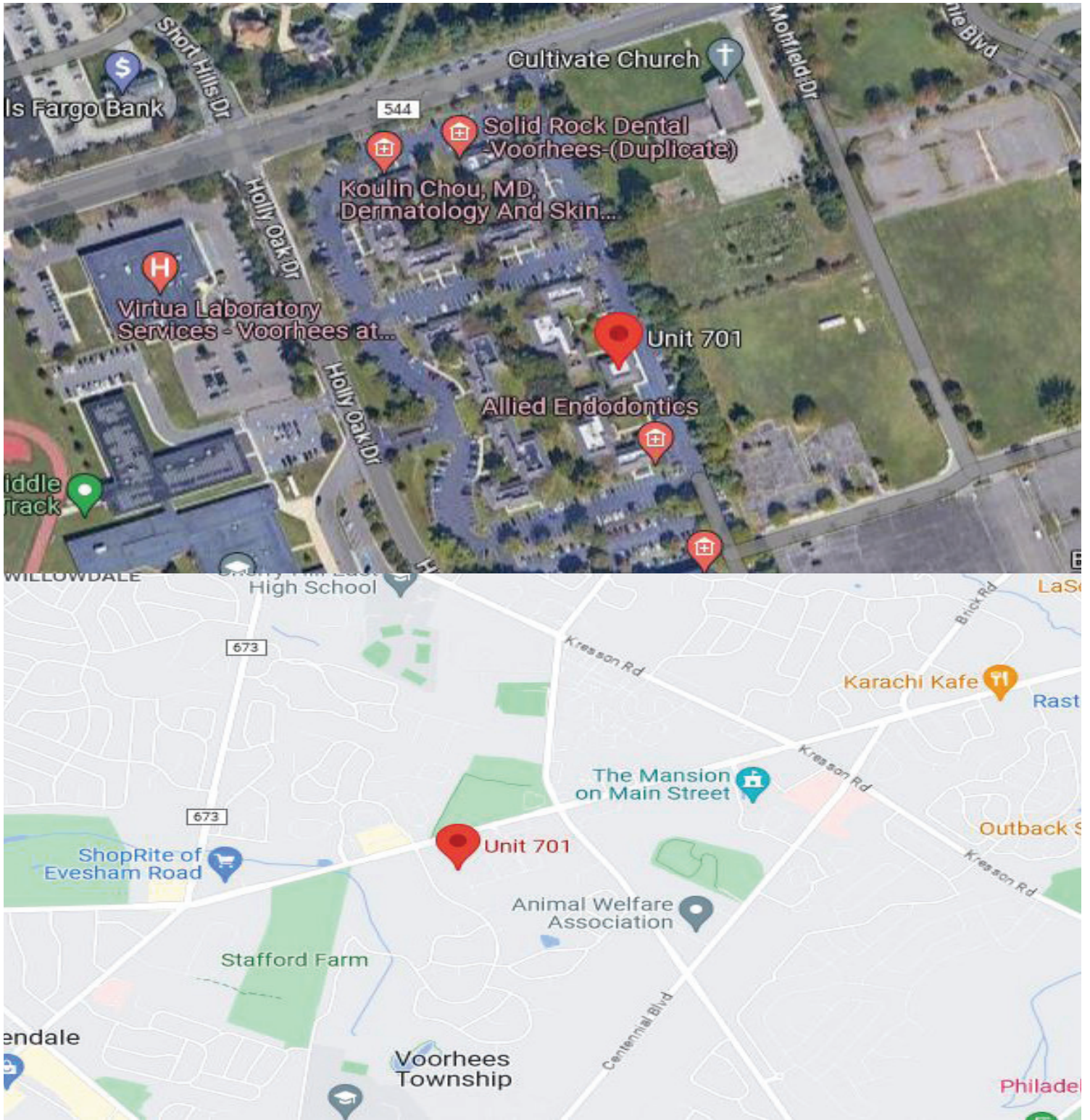
1415 Route 70 E Ste 500

Cherry Hill, NJ 08034

856-354-9700

www.markeim.com





**Kevin Burns**

856-324-5191

kburns@markeim.com

**Markeim Chalmers, Inc**

1415 Route 70 E Ste 500

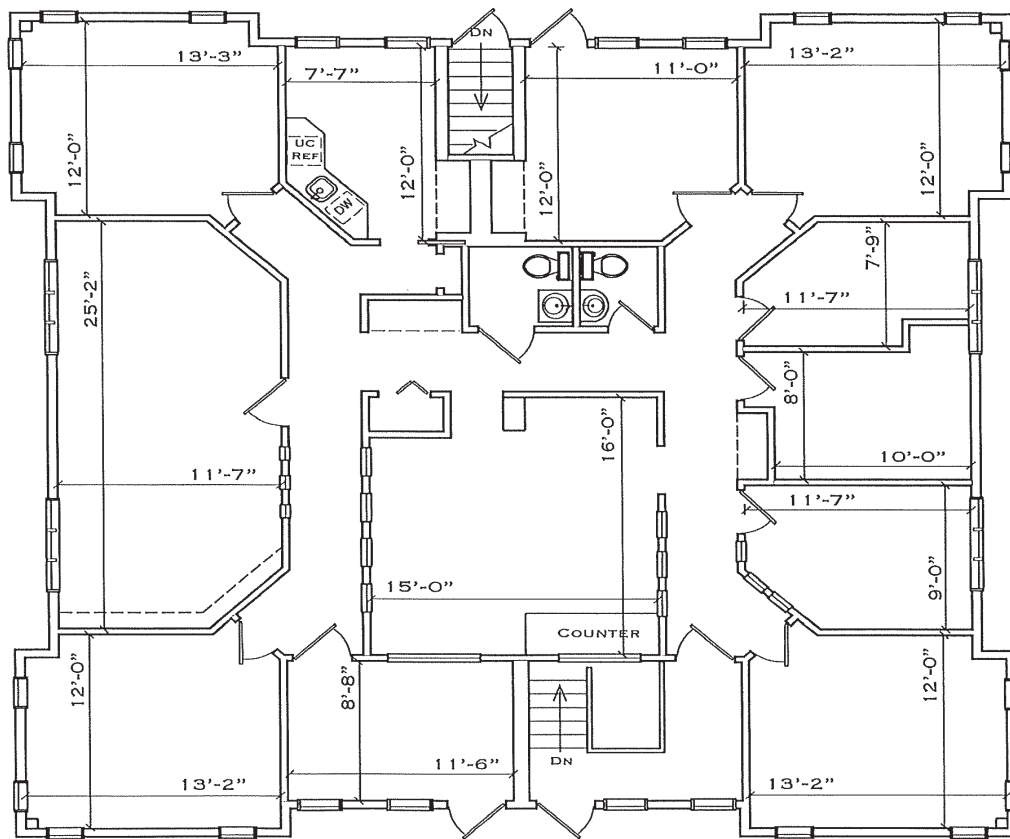
Cherry Hill, NJ 08034

856-354-9700

www.markeim.com

2301 E. EVESHAM RD. VOORHEES, NJ UNITS 701-702	DETAILED CAD FLOOR PLANS		ROOMINDERS	MARKETING SPACE PLANNING
	P 856.429.4233	WEB - WWW.ROOMINDERS.COM	F 856.429.8118	
	E JON@ROOMINDERS.COM	MEASURED BY JON HITCHNER 10.5.2022	REVISED -	
	* ACTUAL MEASUREMENTS MAY VARY		* NOT TO BE USED FOR CONSTRUCTION PURPOSES	
	* POSITION OF WALLS AND FIXTURES ARE APPROXIMATE		* ONLY TO BE USED WITH WRITTEN PERMISSION	

"PAVILIONS OF VOORHEES"



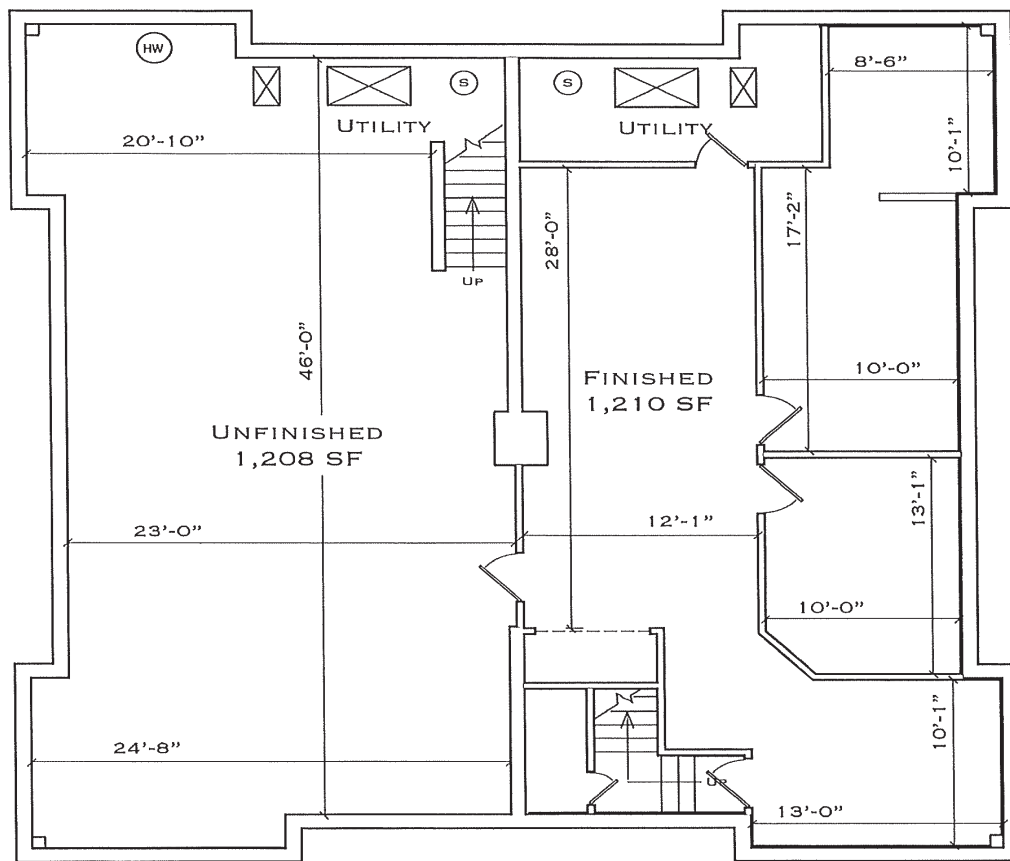
FIRST FLOOR

**Kevin Burns**  
 856-324-5191  
 kburns@markeim.com

**Markeim Chalmers, Inc**  
 1415 Route 70 E Ste 500  
 Cherry Hill, NJ 08034  
 856-354-9700  
 www.markeim.com

2301 E. EVESHAM RD. VOORHEES, NJ UNITS 701-702	DETAILED CAD FLOOR PLANS	ROOMINDERS	MARKETING SPACE PLANNING
	P 856.429.4233	WEB - WWW.ROOMINDERS.COM	F 856.429.8118
	E JON@ROOMINDERS.COM	MEASURED BY JON HITCHNER 10.5.2022	REVISED -
	* ACTUAL MEASUREMENTS MAY VARY		* NOT TO BE USED FOR CONSTRUCTION PURPOSES
* POSITION OF WALLS AND FIXTURES ARE APPROXIMATE		* ONLY TO BE USED WITH WRITTEN PERMISSION	

"PAVILIONS OF VOORHEES"



LOWER LEVEL

**Kevin Burns**  
 856-324-5191  
 kburns@markeim.com

**Markeim Chalmers, Inc**  
 1415 Route 70 E Ste 500  
 Cherry Hill, NJ 08034  
 856-354-9700  
 www.markeim.com