



PROPERTY OVERVIEW

Location:

6-10 Haddon Ave
Haddonfield, NJ

Size:

6,400+/- SF

Sale Price:

\$1,025,000

Property Specifications

Property Type	Retail
Tax I.D.	Block 33.01, Lot 55
Zoning	Downtown Retail
Taxes	\$33,000+/-

Property Features

Downtown Haddonfield
Fully leased 2 unit retail building
Long term tenants

Kevin Burns

856-324-5191

kburns@markeim.com

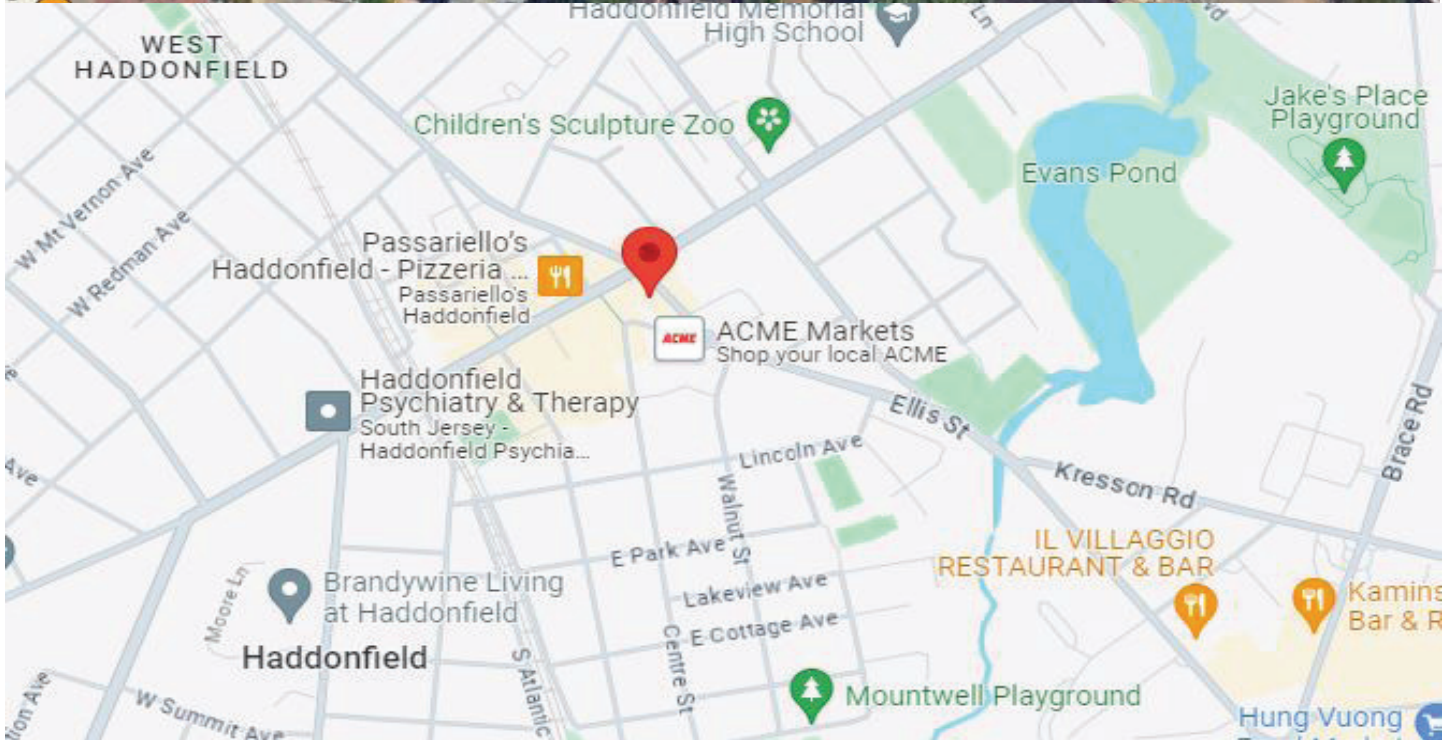
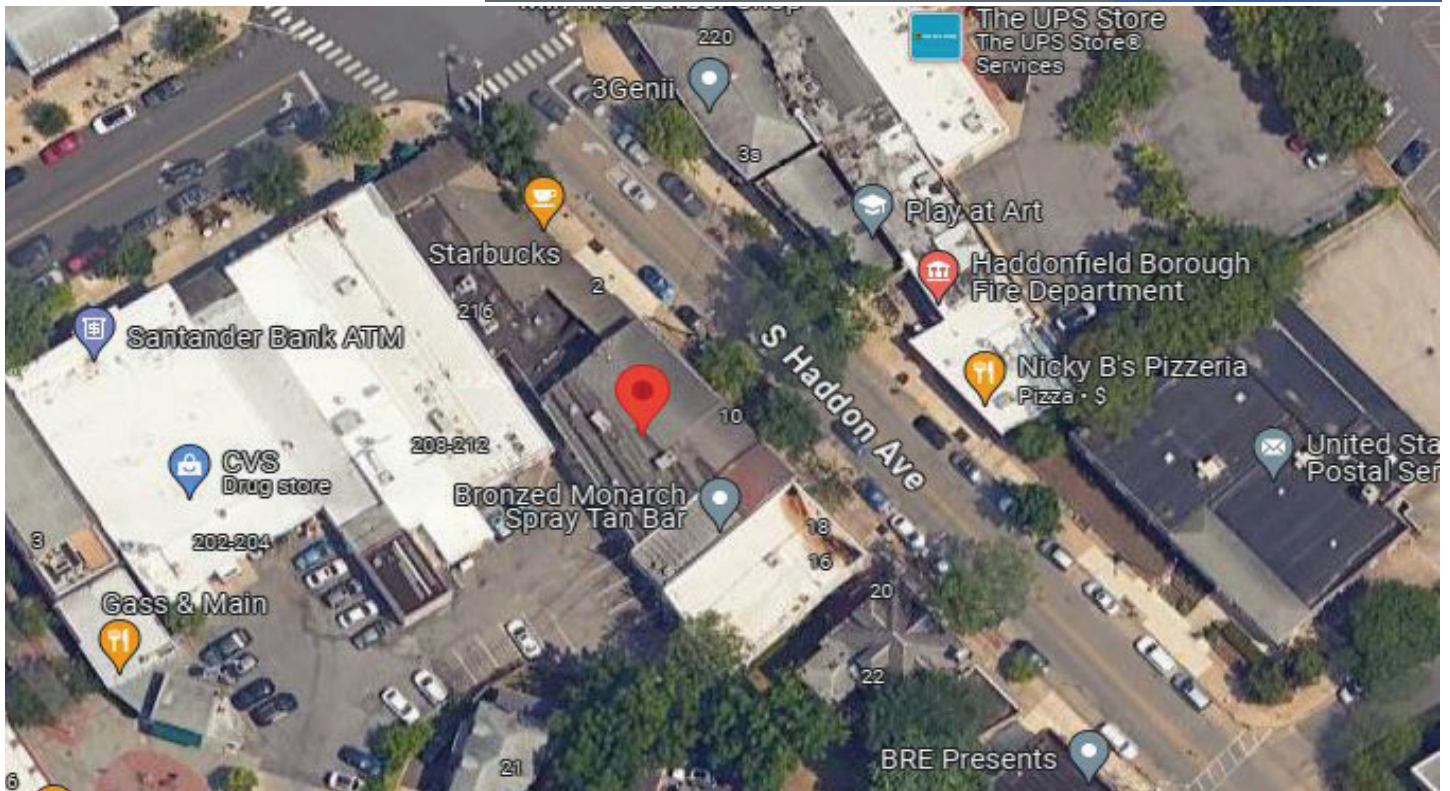
Markeim Chalmers, Inc

1415 Route 70 E Ste 500

Cherry Hill, NJ 08034

856-354-9700

www.markeim.com



Kevin Burns

856-324-5191

kburns@markeim.com

Markeim Chalmers, Inc

1415 Route 70 E Ste 500

Cherry Hill, NJ 08034

856-354-9700

www.markeim.com

6-10 S. HADDON AVE.
HADDONFIELD, NJ

DETAILED CAD
FLOOR PLANS



ROOMINDERS

MARKETING
SPACE PLANNING

P 856.429.4233

WEB - WWW.ROOMINDERS.COM

F 856.429.8118

E JON@ROOMINDERS.COM

MEASURED BY JON HITCHNER 5.8.2024

REVISED -

* ACTUAL MEASUREMENTS MAY VARY

* NOT TO BE USED FOR CONSTRUCTION PURPOSES

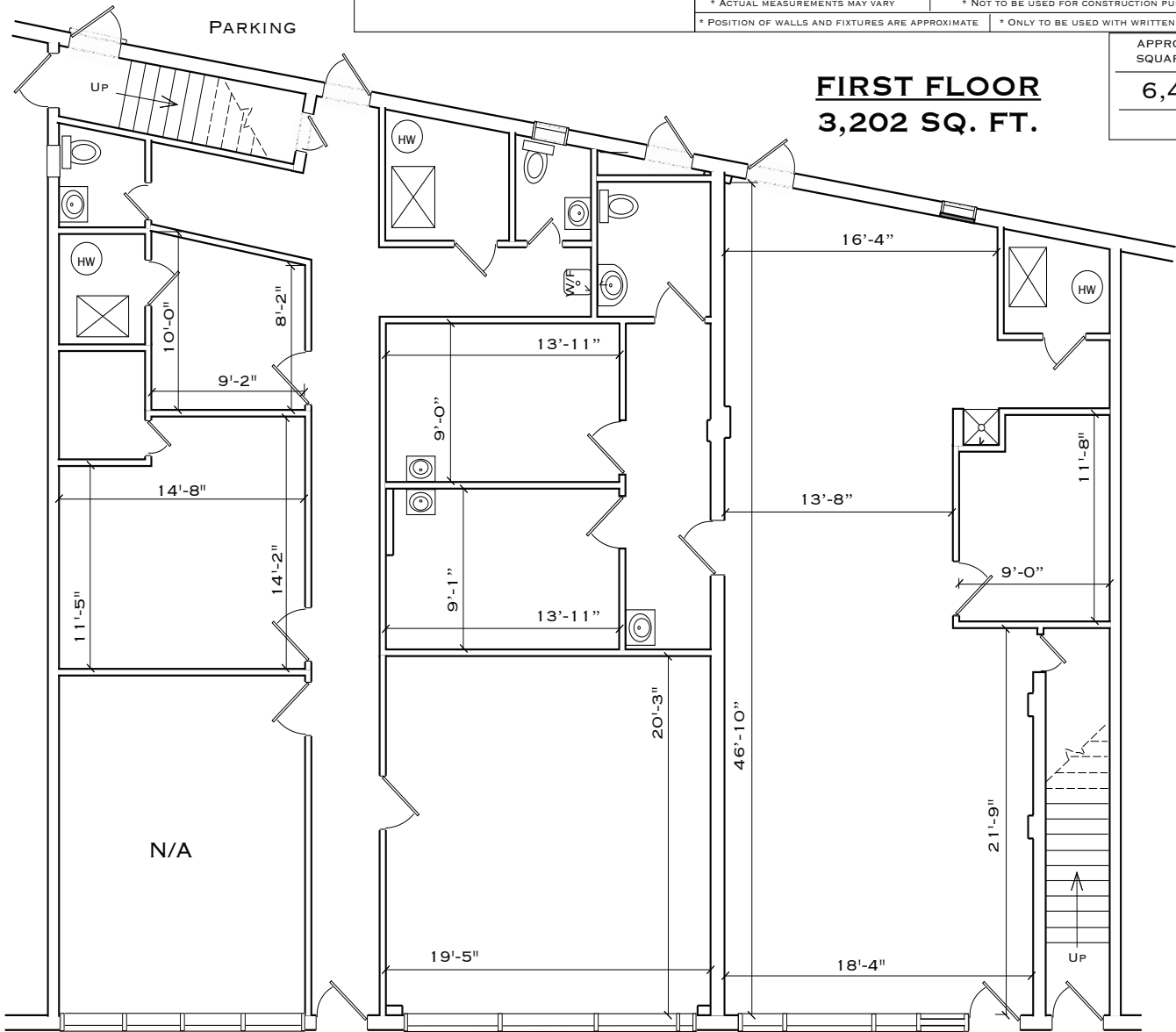
* POSITION OF WALLS AND FIXTURES ARE APPROXIMATE

* ONLY TO BE USED WITH WRITTEN PERMISSION

APPROXIMATE
SQUARE FEET

6,404

FIRST FLOOR
3,202 SQ. FT.



Kevin Burns

856-324-5191

kburns@markeim.com

Markeim Chalmers, Inc

1415 Route 70 E Ste 500

Cherry Hill, NJ 08034

856-354-9700

www.markeim.com

**6-10 S. HADDON AVE.
 HADDONFIELD, NJ**

DETAILED CAD
 FLOOR PLANS



ROOMINDERS

MARKETING
 SPACE PLANNING

P 856.429.4233

WEB - WWW.ROOMINDERS.COM

F 856.429.8118

E JON@ROOMINDERS.COM

MEASURED BY JON HITCHNER 5.8.2024

REVISED -

* ACTUAL MEASUREMENTS MAY VARY

* NOT TO BE USED FOR CONSTRUCTION PURPOSES

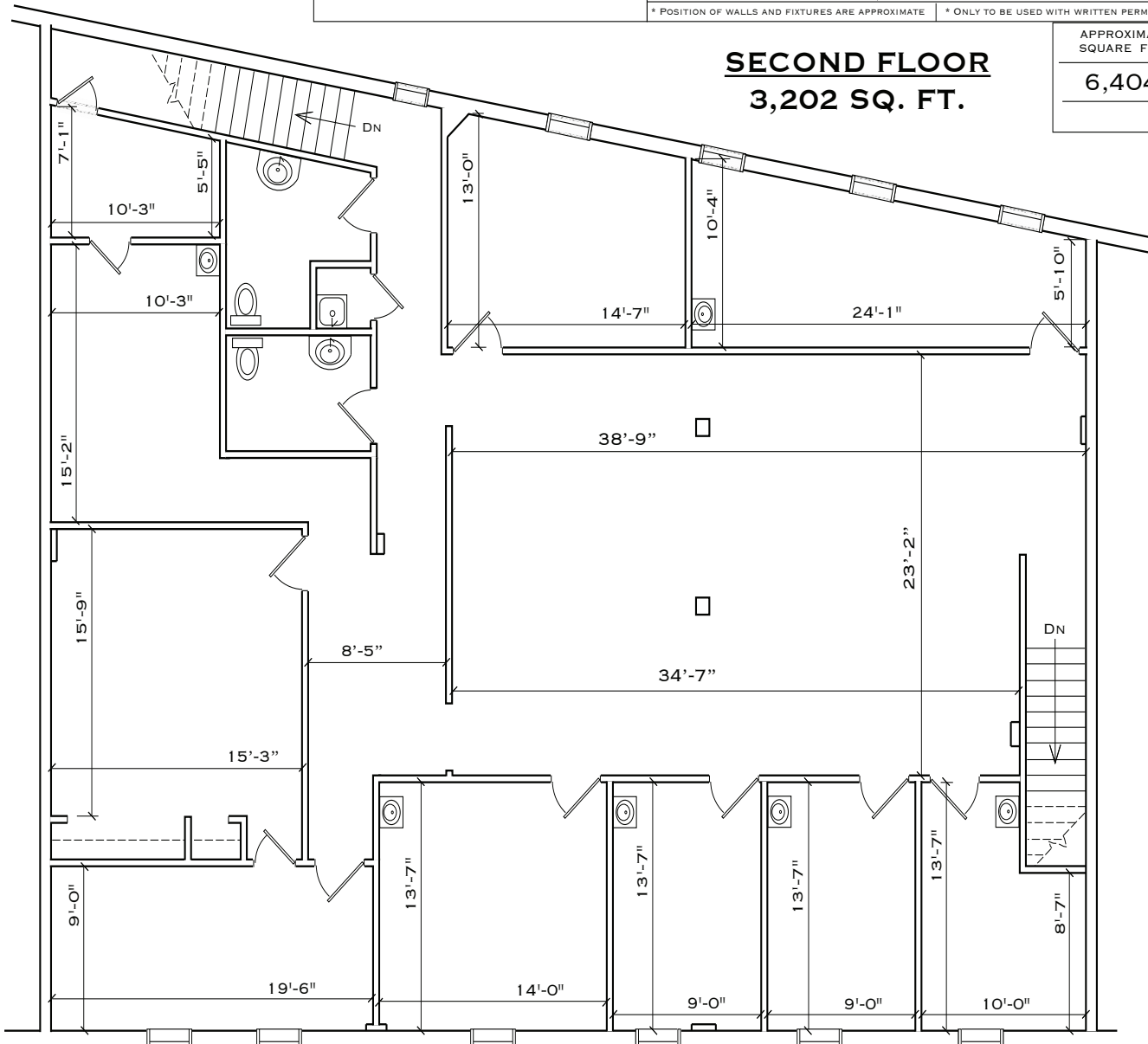
* POSITION OF WALLS AND FIXTURES ARE APPROXIMATE

* ONLY TO BE USED WITH WRITTEN PERMISSION

APPROXIMATE
 SQUARE FEET

6,404

**SECOND FLOOR
 3,202 SQ. FT.**



Kevin Burns

856-324-5191

kburns@markeim.com

Markeim Chalmers, Inc

1415 Route 70 E Ste 500

Cherry Hill, NJ 08034

856-354-9700

www.markeim.com