



## PROPERTY OVERVIEW

**Location:**

109 E. Laurel Road  
Stratford, NJ

**Size:**

7,800+/- SF with  
3,100+/- SF Lower Level

**Rental Rate:**

\$16.00/SF NNN

**Sale Price:**

\$799,000

### Property Specifications

Property Type	Office/Medical
Parking	On Site - 25 Spaces
Real Estate Taxes	\$15,500
Zoning	Office

### Property Features

Adjacent to Jefferson Hospital & Rowan-Virtua Medicine & School of Osteopathic Medicine

Great Signage - Building & Monument

Ideal uses: Office/Medical, Senior/Daycare Center, Multi-Specialty Clinic, School

Easy access to Rt. 295, Rt. 30, Rt. 42, Rt. 561 and the PATCO

High visibility at signalized intersection

**Kevin Burns**

856-324-5191

kburns@markeim.com

**Adam Dembo**

856-324-5194

adembo@markeim.com

**Markeim Chalmers, Inc**

1415 Route 70 E Ste 500

Cherry Hill, NJ 08034

856-354-9700

www.markeim.com



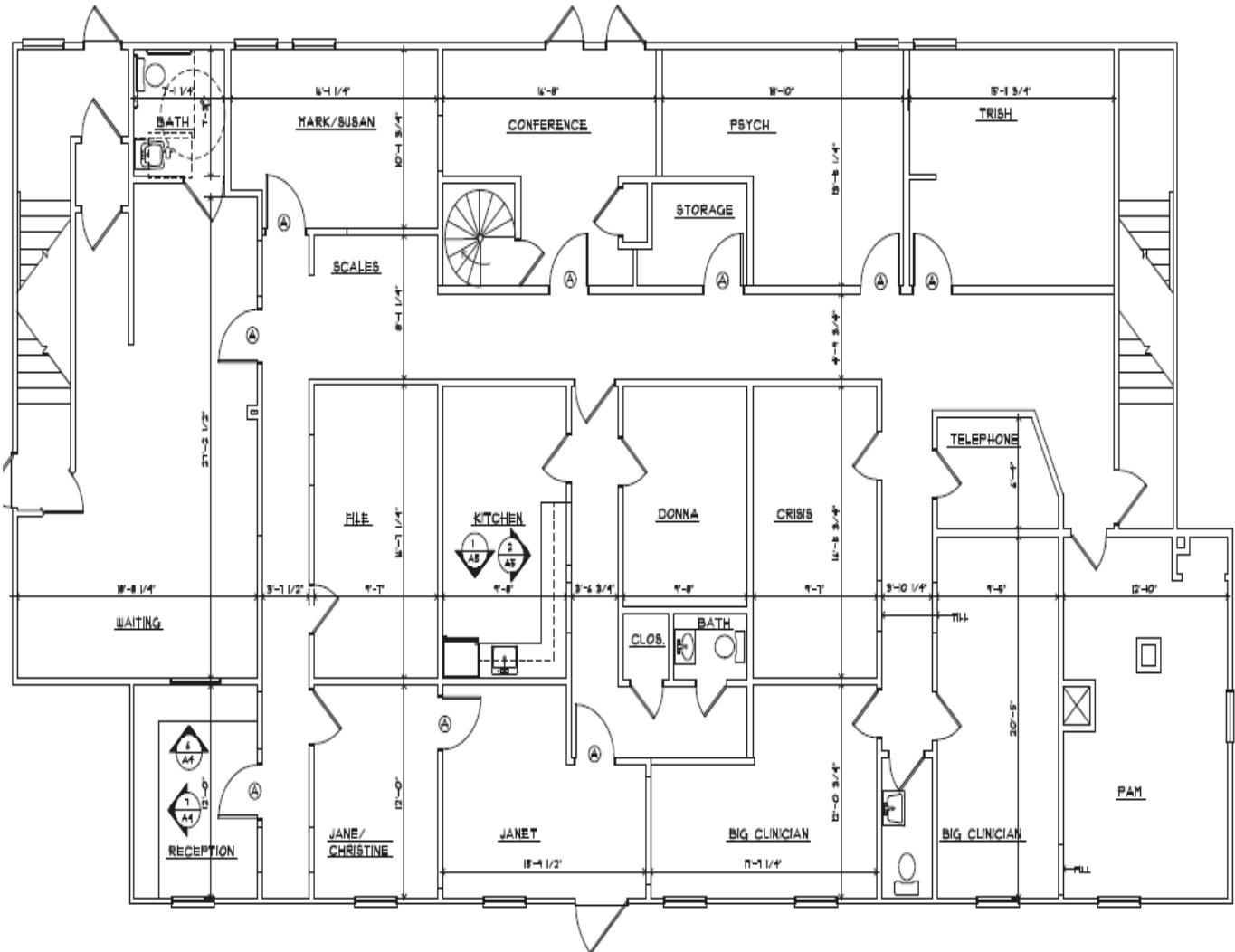


**Kevin Burns**  
856-324-5191  
kburns@markeim.com

**Adam Dembo**  
856-324-5194  
adembo@markeim.com

**Markeim Chalmers, Inc**  
1415 Route 70 E Ste 500  
Cherry Hill, NJ 08034  
856-354-9700  
www.markeim.com

**FIRST FLOOR 4,495sf**



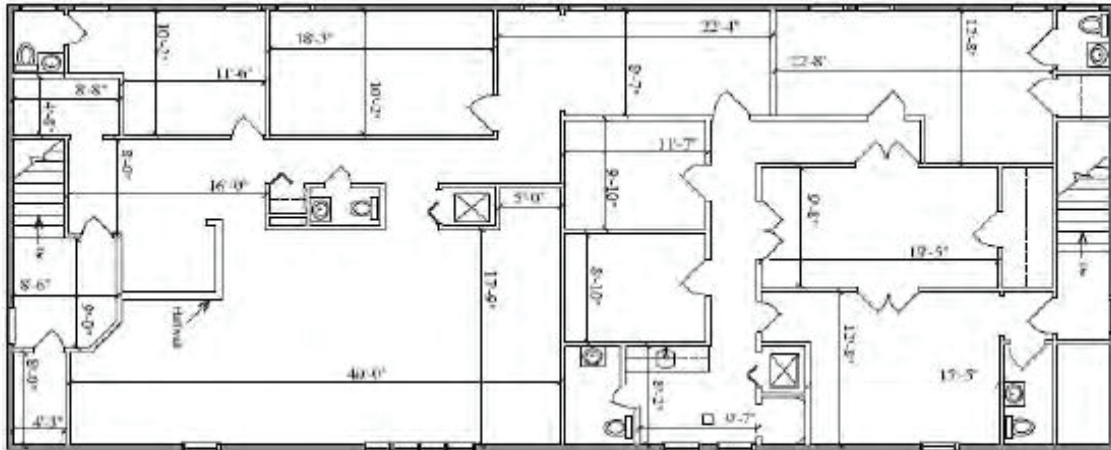
**Kevin Burns**  
856-324-5191  
kburns@markeim.com

**Adam Dembo**  
856-324-5194  
adembo@markeim.com

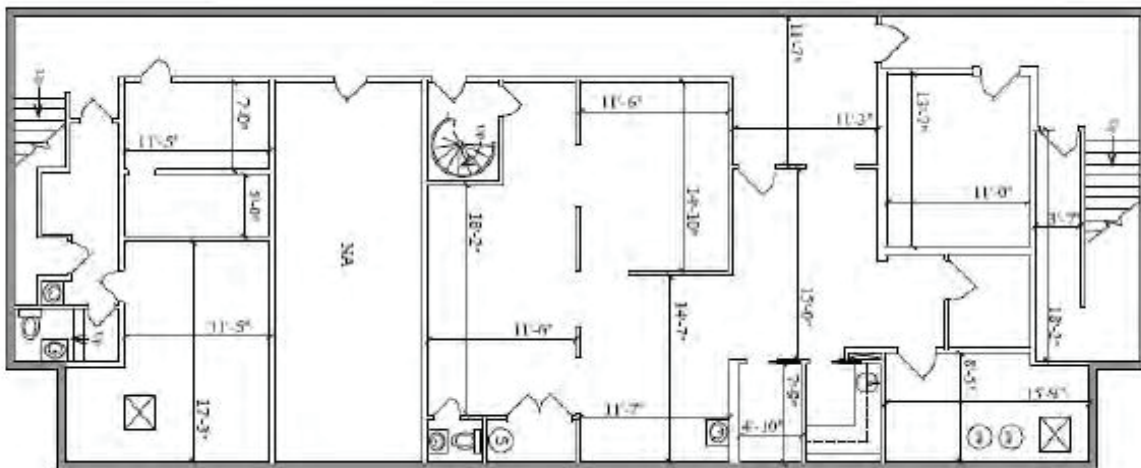
**Markeim Chalmers, Inc**  
1415 Route 70 E Ste 500  
Cherry Hill, NJ 08034  
856-354-9700  
www.markeim.com



**SECOND FLOOR - 3,320sf**



**LOWER LEVEL - 3,172sf**



**Kevin Burns**

856-324-5191

kburns@markeim.com

**Adam Dembo**

856-324-5194

adembo@markeim.com

**Markeim Chalmers, Inc**

1415 Route 70 E Ste 500

Cherry Hill, NJ 08034

856-354-9700

www.markeim.com