



PROPERTY OVERVIEW

Location:

Lullworth Hall
427 Kings Highway E
Haddonfield, NJ

Size:

Building Size: 6,850+/- SF
Land Size: 1.15+/- Acres

Sale Price:

Call for details

Property Specifications

| | |
|-----------|---------------------|
| Tax I.D. | Block 13, Lot 25.01 |
| Age | Built in 1886 |
| Occupancy | Immediate |

Property Features

| |
|---|
| Queen Anne Victorian style architecture |
| Redevelopment area |
| Walking distance to downtown Haddonfield. |

Listed on the State and National Registry of Historic Places

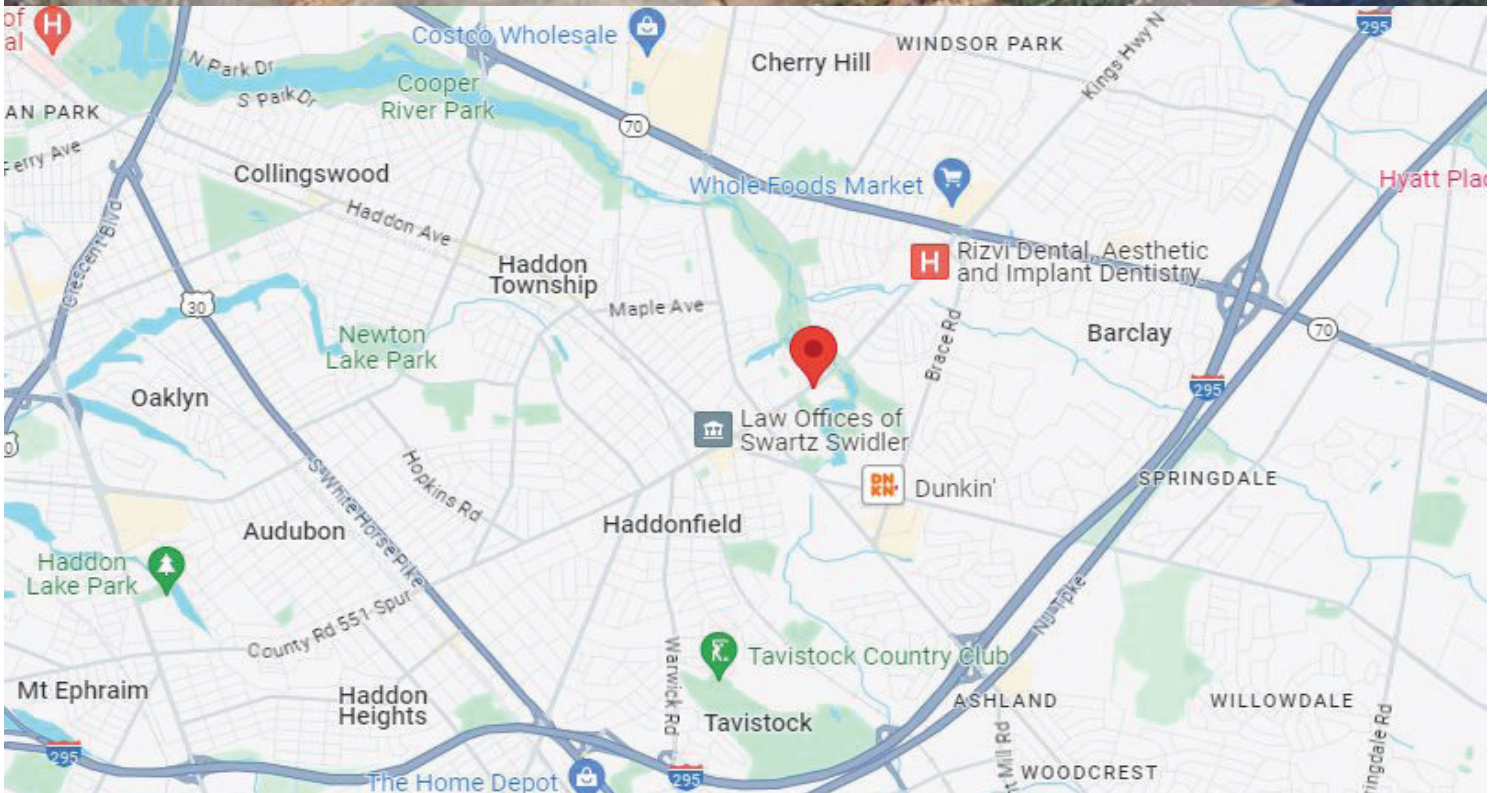
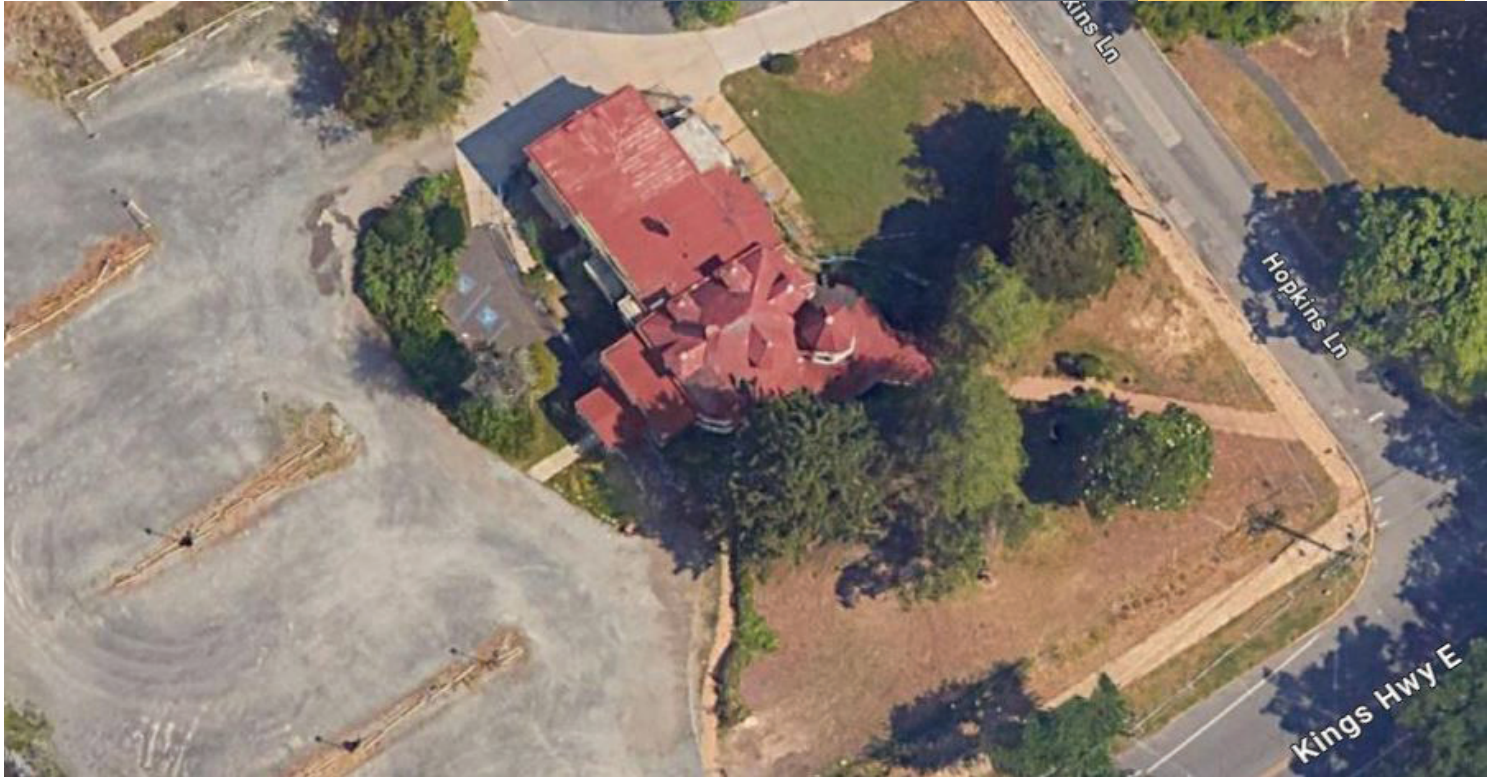
Bid Deadline September 17, 2024

Kevin Burns

856-324-5191
kburns@markeim.com

Markeim Chalmers, Inc

1415 Route 70 E Ste 500
Cherry Hill, NJ 08034
856-354-9700
www.markeim.com



Kevin Burns

856-324-5191

kburns@markeim.com

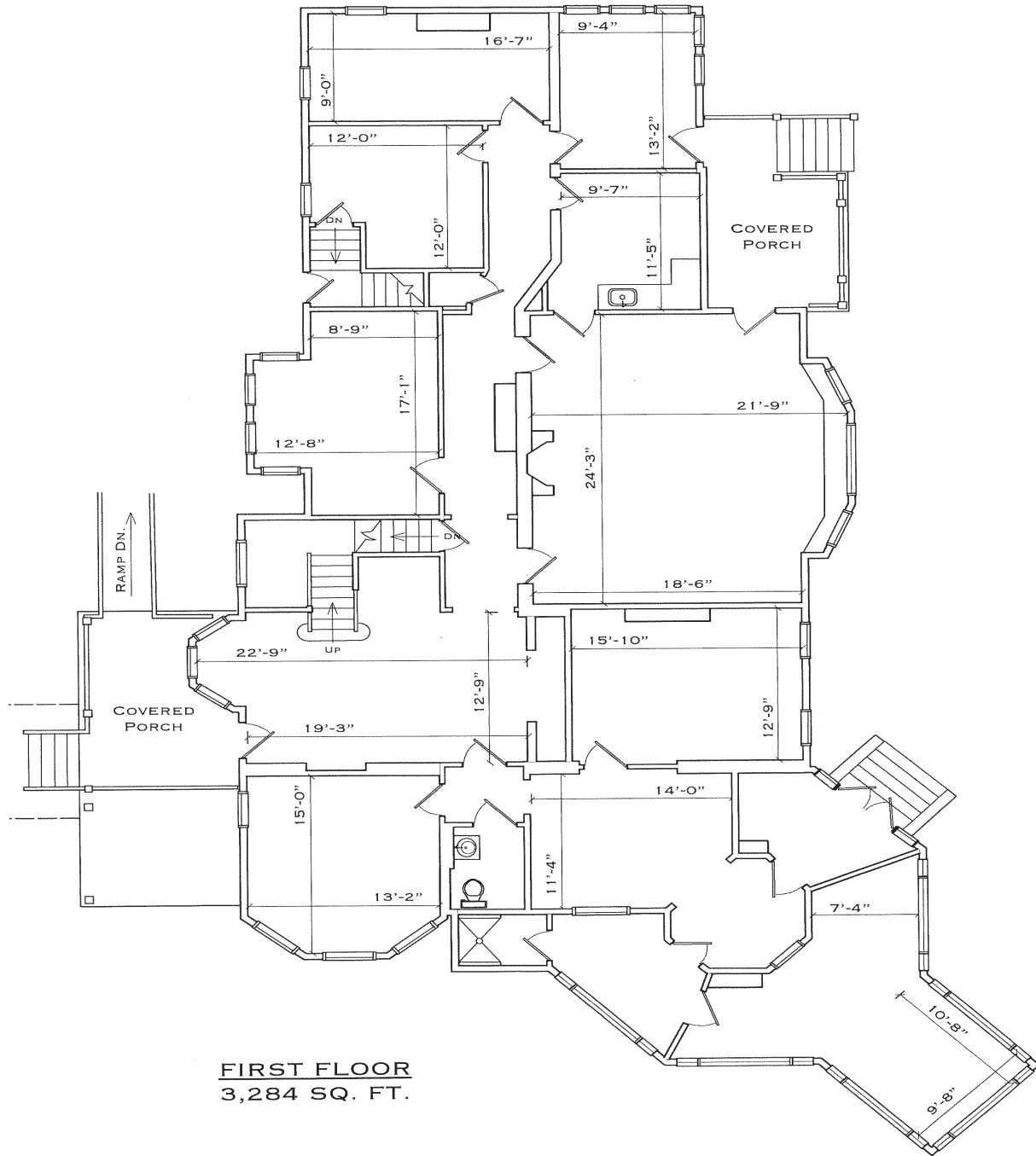
Markeim Chalmers, Inc

1415 Route 70 E Ste 500

Cherry Hill, NJ 08034

856-354-9700

www.markeim.com



Kevin Burns

856-324-5191

kburns@markeim.com

Markeim Chalmers, Inc

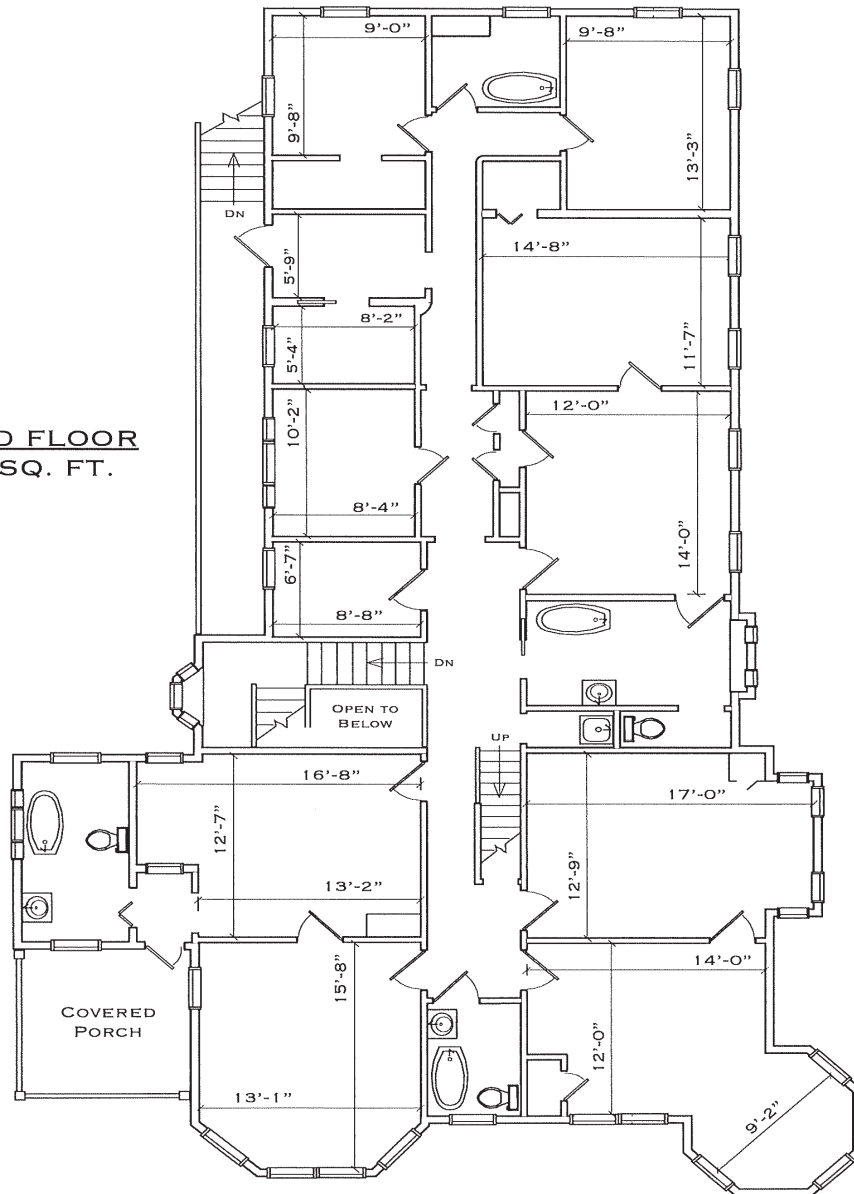
1415 Route 70 E Ste 500

Cherry Hill, NJ 08034

856-354-9700

www.markeim.com

SECOND FLOOR
2,656 SQ. FT.



Kevin Burns

856-324-5191

kburns@markeim.com

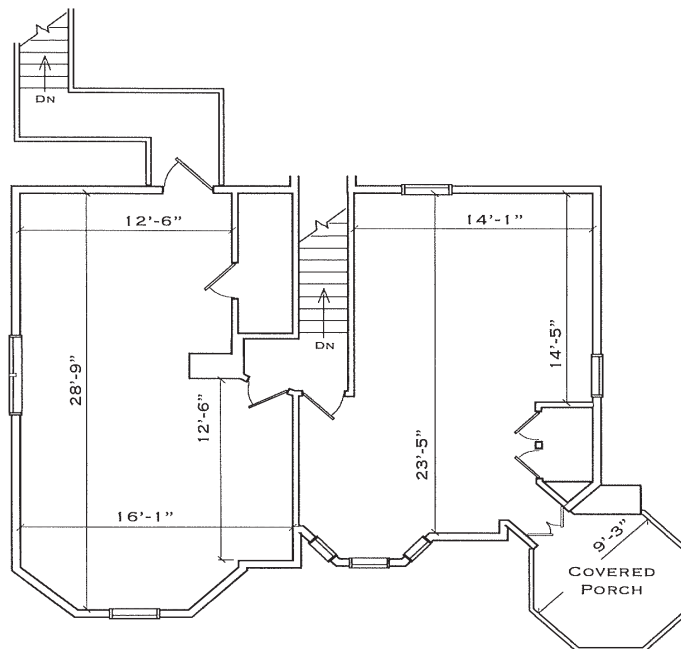
Markeim Chalmers, Inc

1415 Route 70 E Ste 500

Cherry Hill, NJ 08034

856-354-9700

www.markeim.com



THIRD FLOOR
910 SQ. FT.

Kevin Burns

856-324-5191

kburns@markeim.com

Markeim Chalmers, Inc

1415 Route 70 E Ste 500

Cherry Hill, NJ 08034

856-354-9700

www.markeim.com