



PROPERTY OVERVIEW

Location:

709-711 Haddon Ave
Collingswood, NJ

Size:

3,611+/- SF

Lease Price:

Call for details

Sale Price:

\$675,000

Property Specifications

Property Type	Retail with 2nd Fl Apt
Taxes	\$10,500+/-
Tax I.D.	Block 30.02, Lot 5
Zoning	Central Business District

Property Features

In the middle of Collingswood Central Business District

Great signage with windowed storefront

Ideal for any retail use


Fully renovated 2nd floor residential unit

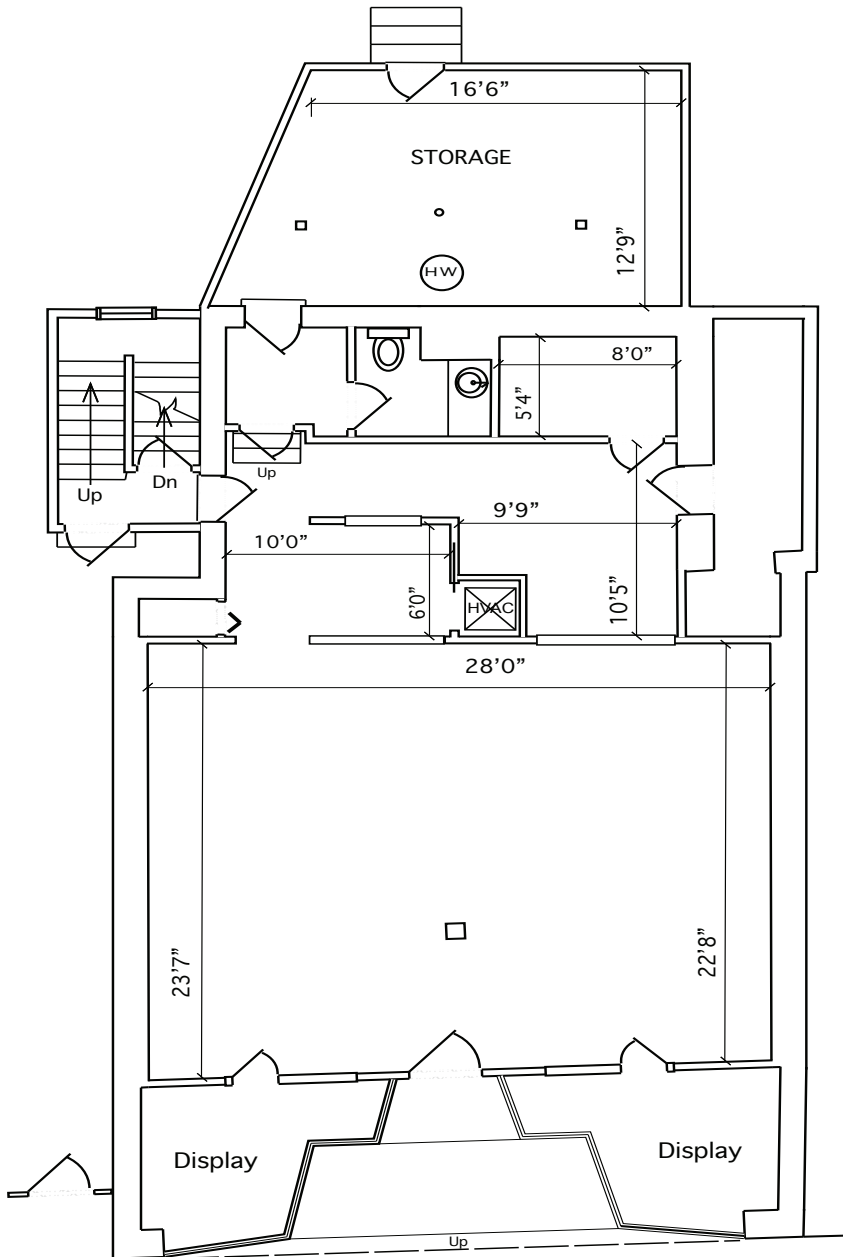
Kevin Burns

856-324-5191
kburns@markeim.com

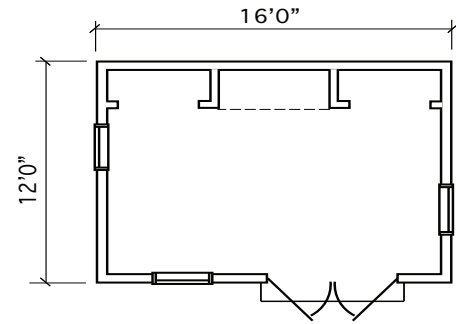
Markeim Chalmers, Inc

1415 Route 70 E Ste 500
Cherry Hill, NJ 08034
856-354-9700
www.markeim.com

709-711 HADDON AVE. COLLINGSWOOD, NJ	DETAILED FLOOR PLANS  ROOMINDERS REAL ESTATE MARKETING			APPROXIMATE SQUARE FEET
	P 856.429.4233	WEB - WWW.ROOMINDERS.COM	C 609-504-2117	3,611
	E JON@ROOMINDERS.COM	MEASURED BY JON HITCHNER 1.9.2025	REVISED -	INCLUDES STORAGE ROOM @ 260 SF
	* ACTUAL MEASUREMENTS MAY VARY		* NOT TO BE USED FOR CONSTRUCTION PURPOSES	
* POSITION OF WALLS AND FIXTURES ARE APPROXIMATE		* ONLY TO BE USED WITH WRITTEN PERMISSION		STUDIO ADDITIONAL - 192 SF



FIRST FLOOR
 1,622 SQ. FT.




STUDIO OUT-BUILDING
 192 SF.

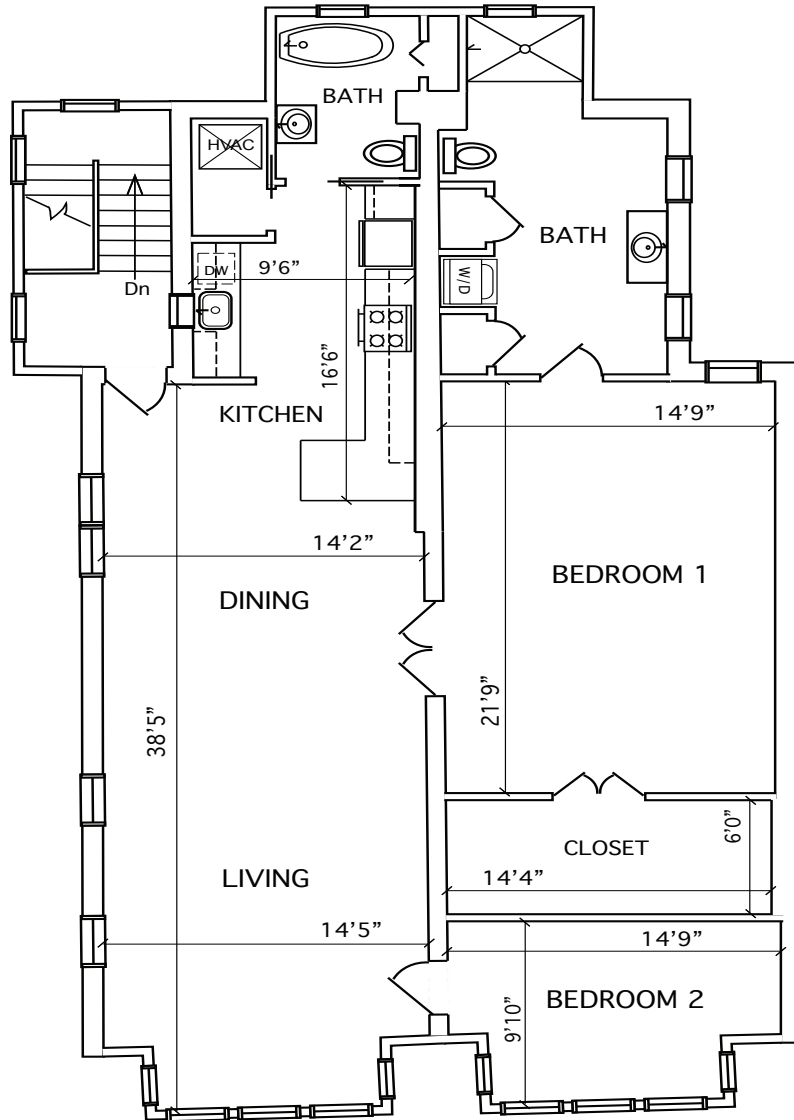
Kevin Burns

856-324-5191
 kburns@markeim.com

Markeim Chalmers, Inc

1415 Route 70 E Ste 500
 Cherry Hill, NJ 08034
 856-354-9700
 www.markeim.com

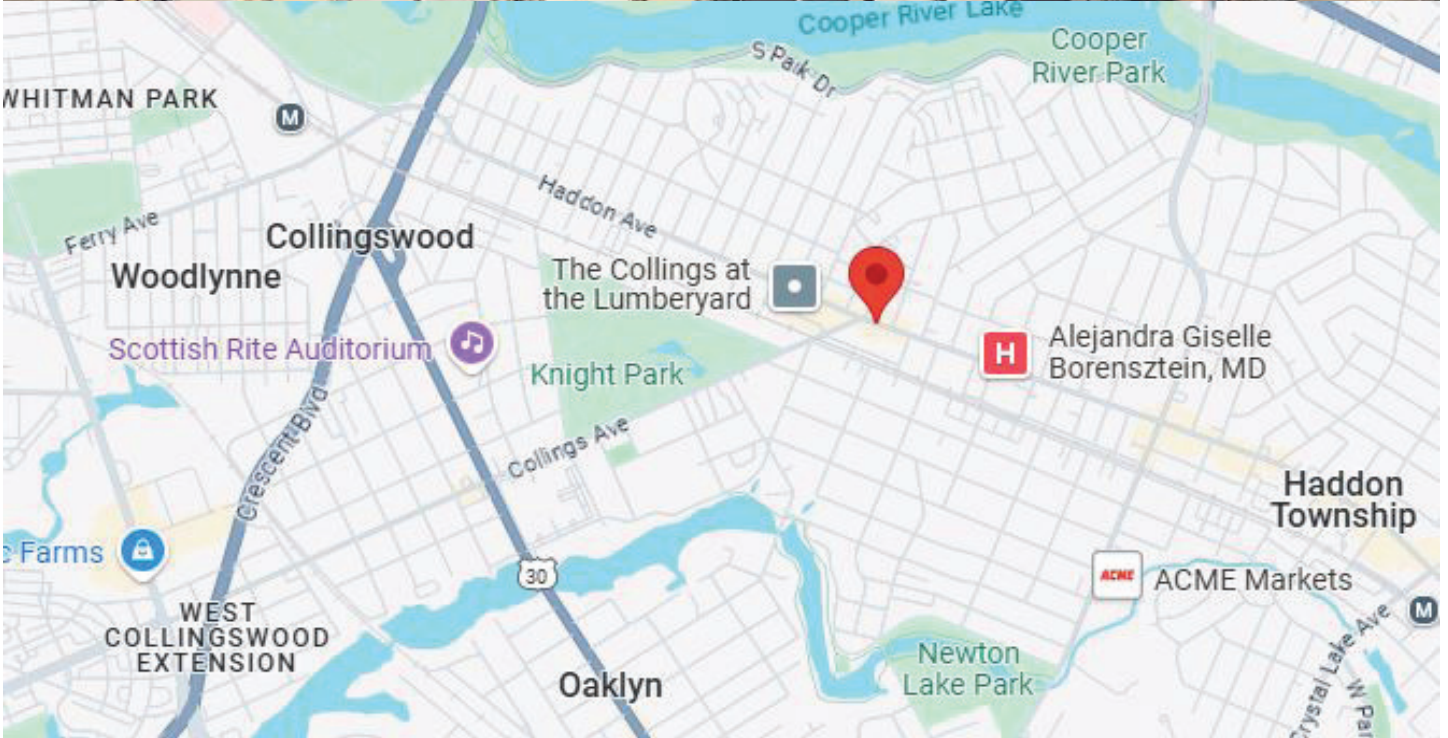
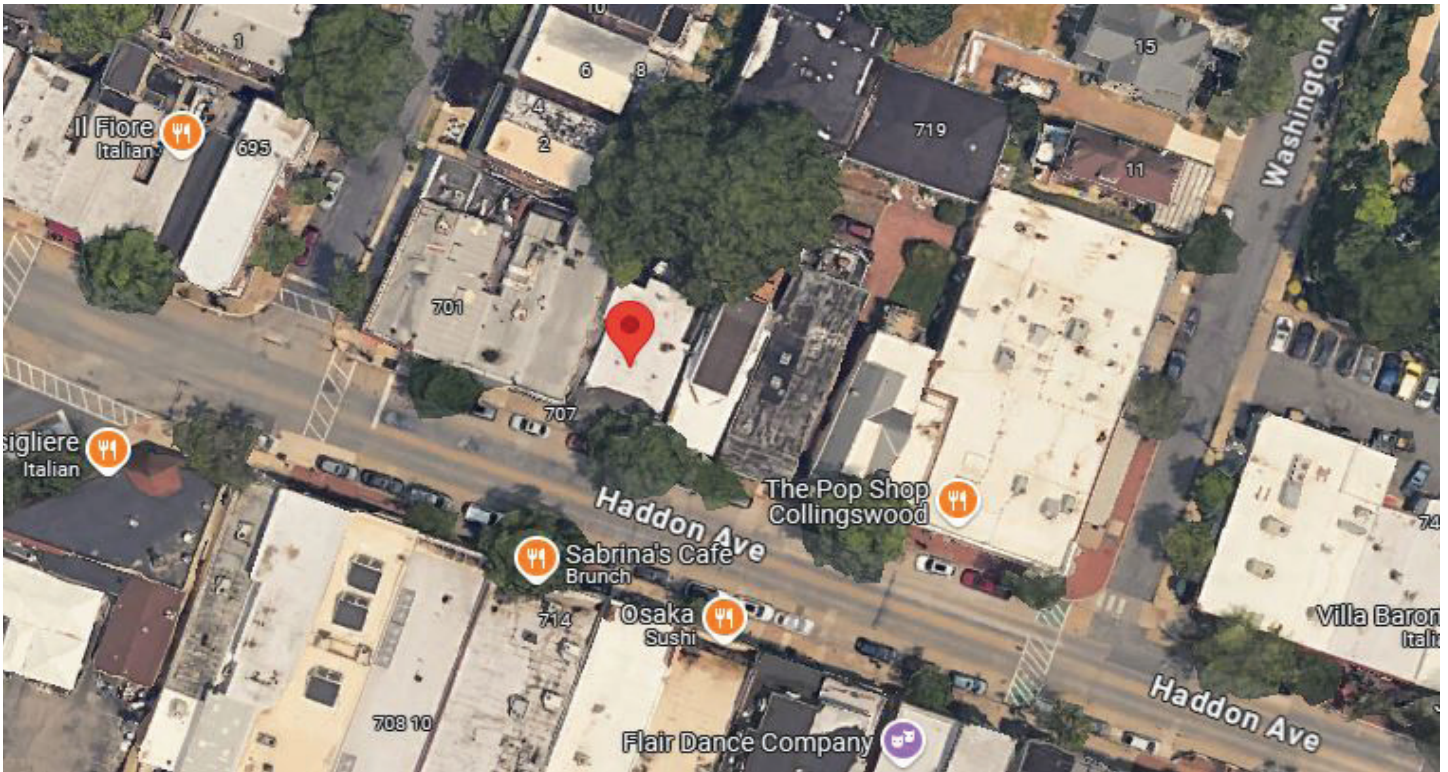
709-711 HADDON AVE. COLLINGSWOOD, NJ	DETAILED FLOOR PLANS  ROOMINDERS REAL ESTATE MARKETING			APPROXIMATE SQUARE FEET
	P 856.429.4233	WEB - WWW.ROOMINDERS.COM	C 609-504-2117	3,611
	E JON@ROOMINDERS.COM	MEASURED BY JON HITCHNER 1.9.2025	REVISED -	INCLUDES STORAGE ROOM @ 260 SF
	* ACTUAL MEASUREMENTS MAY VARY		* NOT TO BE USED FOR CONSTRUCTION PURPOSES	
	* POSITION OF WALLS AND FIXTURES ARE APPROXIMATE		* ONLY TO BE USED WITH WRITTEN PERMISSION	



SECOND FLOOR
 1,729 SQ. FT.

Kevin Burns
 856-324-5191
 kburns@markeim.com

Markeim Chalmers, Inc
 1415 Route 70 E Ste 500
 Cherry Hill, NJ 08034
 856-354-9700
 www.markeim.com



Kevin Burns

856-324-5191

kburns@markeim.com

Markeim Chalmers, Inc

1415 Route 70 E Ste 500

Cherry Hill, NJ 08034

856-354-9700

www.markeim.com