



PROPERTY OVERVIEW

Location:

41 Ellis Street
Haddonfield, NJ

Size:

2,200+/- Square Feet

Sale Price:

\$599,000

Property Specifications

Property Type Office/Retail with 2nd Floor Apartment

R.E. Taxes \$13,500+/-

Tax I.D. Block 33.01, Lot 48

Property Features

Great signage

Walking distance to PATCO high speed line, banks, restaurants and shops in downtown Haddonfield

Kevin Burns

856-324-5191

kburns@markeim.com

Markeim Chalmers, Inc

1415 Route 70 E Ste 500

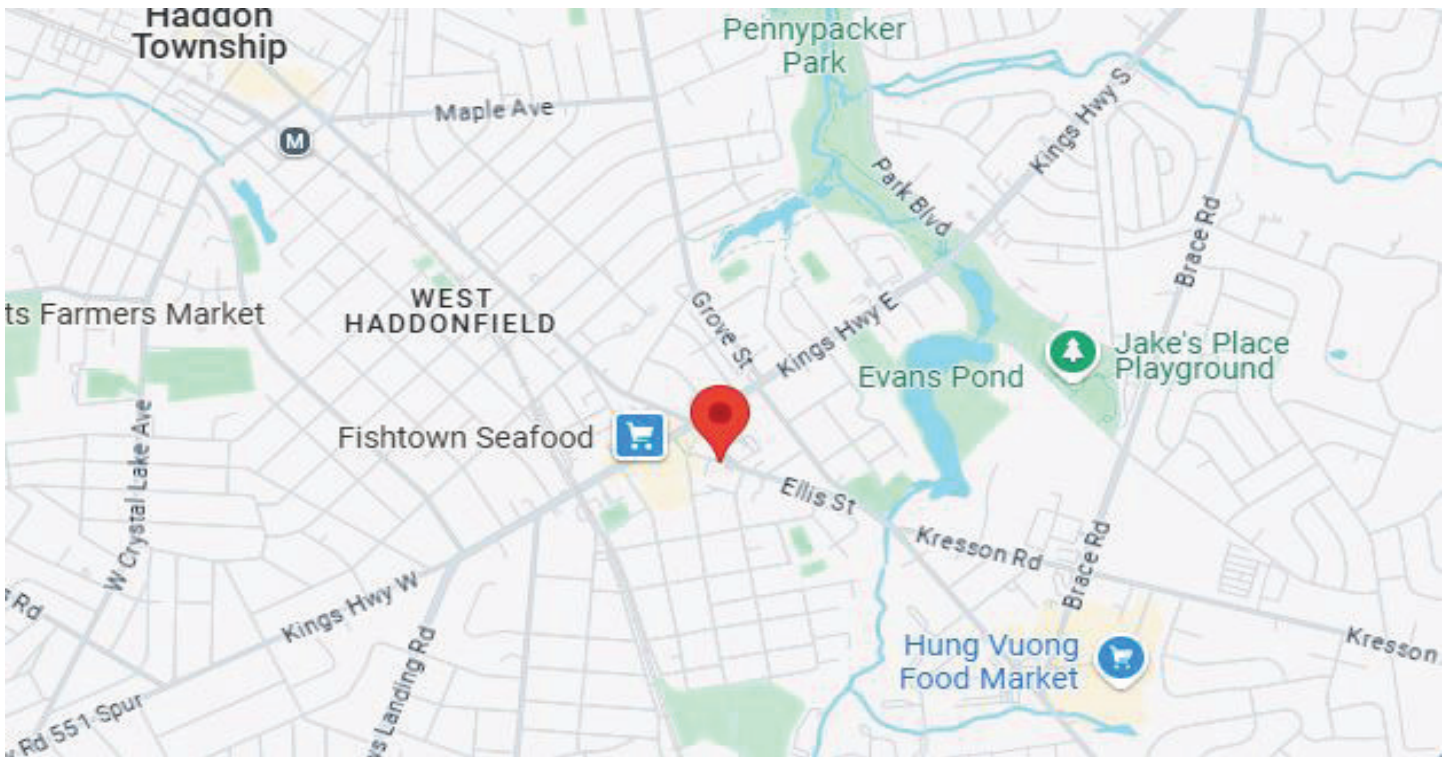
Cherry Hill, NJ 08034

856-354-9700

www.markeim.com

41 ELLIS STREET
HADDONFIELD, NJ

**OFFICE /RETAIL
WITH
RESIDENTIAL
APARTMENT**



Kevin Burns

856-324-5191

kburns@markeim.com

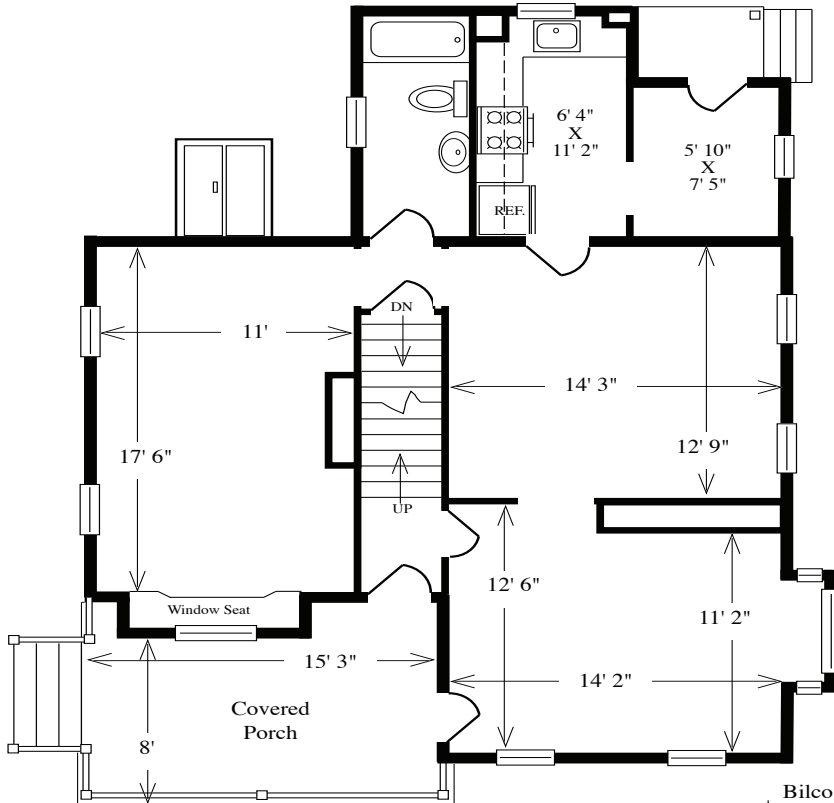
Markeim Chalmers, Inc

1415 Route 70 E Ste 500

Cherry Hill, NJ 08034

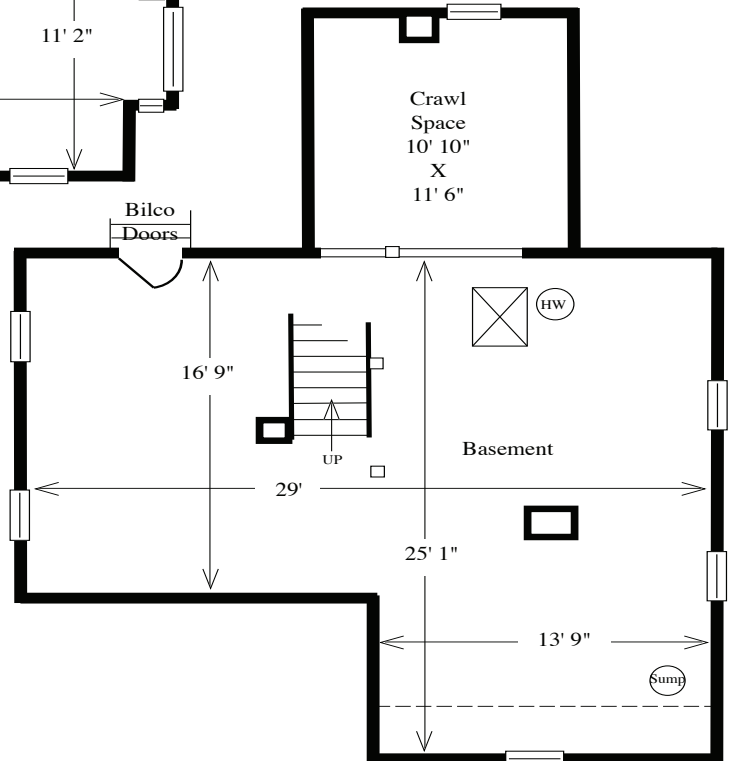
856-354-9700

www.markeim.com



FIRST FLOOR
908 SQ. FT.

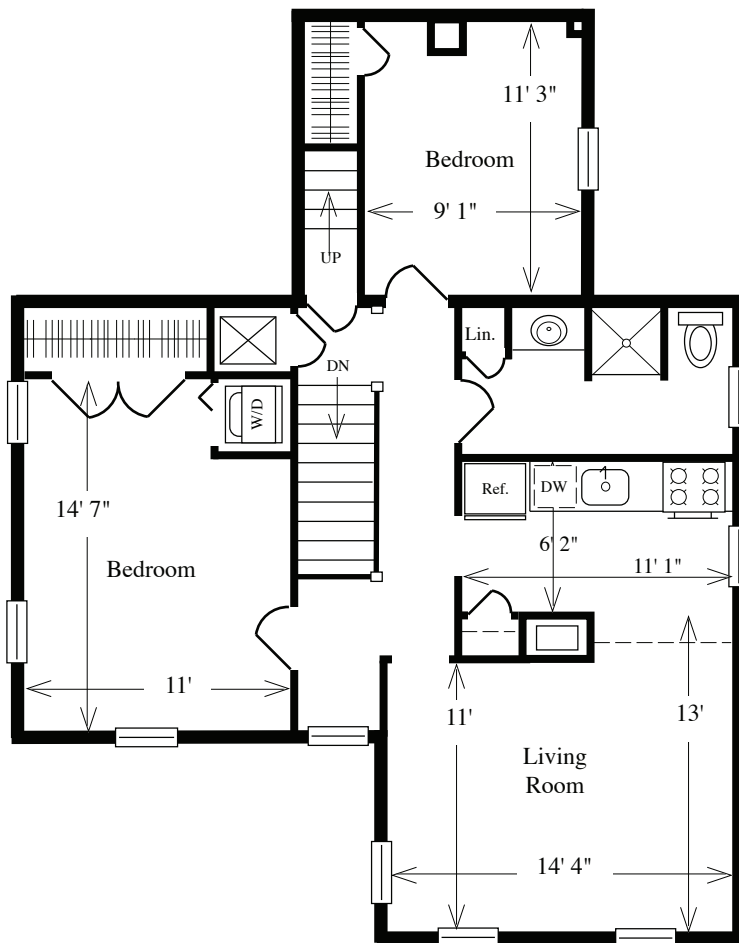
BASEMENT
665 SQ. FT.
 (Crawl Space 143 s.f. add.)



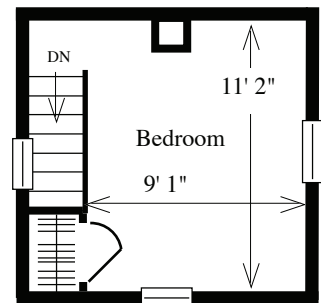
Kevin Burns
 856-324-5191
 kburns@markeim.com

Markeim Chalmers, Inc
 1415 Route 70 E Ste 500
 Cherry Hill, NJ 08034
 856-354-9700
 www.markeim.com

SECOND FLOOR
820 SQ. FT.



THIRD FLOOR
149 SQ. FT.



Kevin Burns

856-324-5191

kburns@markeim.com

Markeim Chalmers, Inc

1415 Route 70 E Ste 500

Cherry Hill, NJ 08034

856-354-9700

www.markeim.com