



PROPERTY OVERVIEW

Location:

109 E. Laurel Road
Stratford, NJ

Size:

7,800+/- SF with
3,100+/- SF Lower Level

Rental Rate:

\$16.00/SF NNN

Sale Price:

~~\$799,000~~

REDUCED TO \$699,000

SELLER FINANCING AVAILABLE

Property Specifications

Property Type	Office/Medical
Parking	On Site - 25 Spaces
Real Estate Taxes	\$15,500
Zoning	Office

Property Features

Adjacent to Jefferson Hospital & Rowan-Virtua Medicine & School of Osteopathic Medicine

Great Signage - Building & Monument

Ideal uses: Office/Medical, Senior/Daycare Center, Multi-Specialty Clinic, School

Easy access to Rt. 295, Rt. 30, Rt. 42, Rt. 561 and the PATCO

High visibility at signalized intersection

Kevin Burns

856-324-5191

kburns@markeim.com

Adam Dembo

856-324-5194

adembo@markeim.com

Markeim Chalmers, Inc

1415 Route 70 E Ste 500

Cherry Hill, NJ 08034

856-354-9700

www.markeim.com

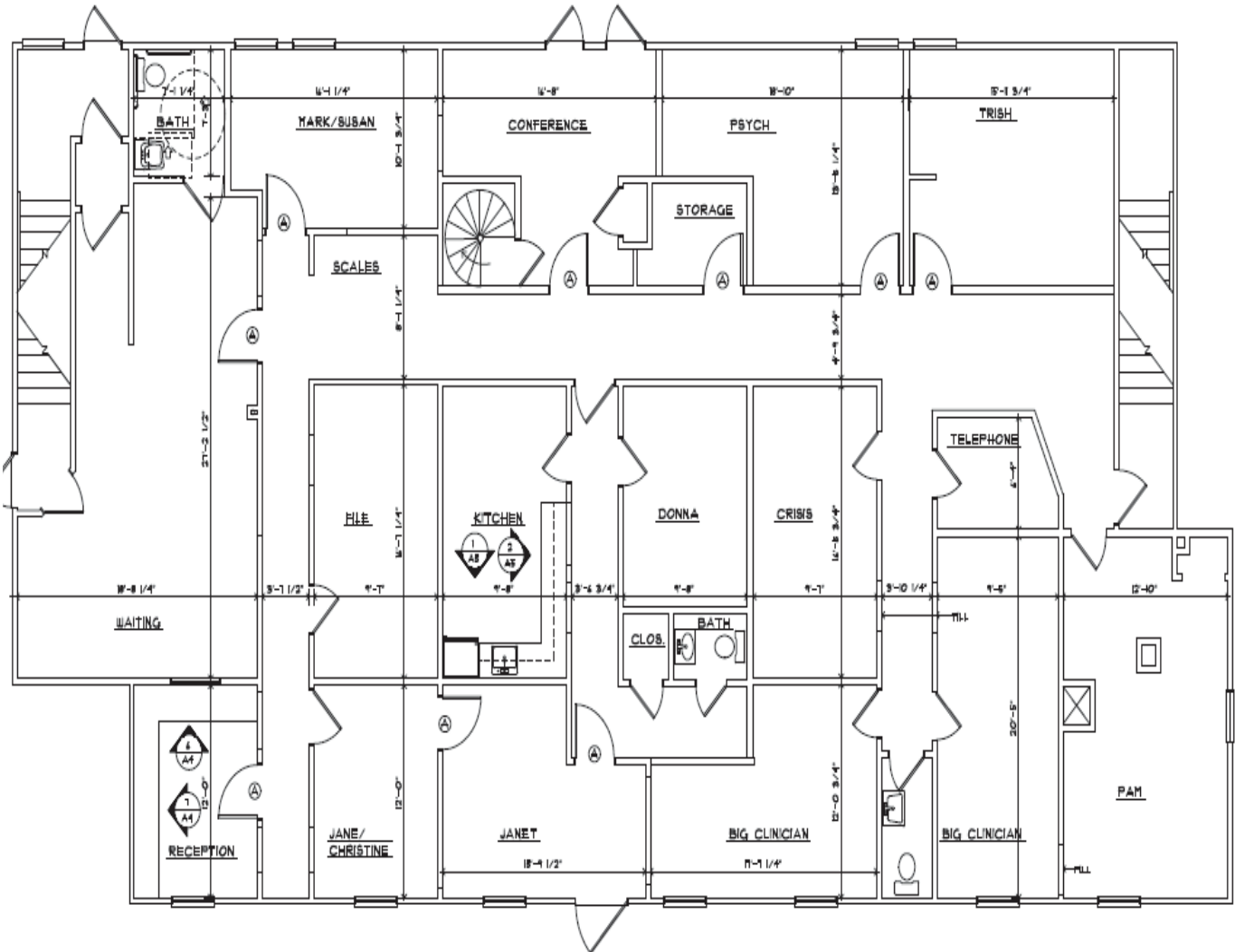


Kevin Burns
856-324-5191
kburns@markeim.com

Adam Dembo
856-324-5194
adembo@markeim.com

Markeim Chalmers, Inc
1415 Route 70 E Ste 500
Cherry Hill, NJ 08034
856-354-9700
www.markeim.com

FIRST FLOOR 4,495sf



Kevin Burns
856-324-5191
kburns@markeim.com

Adam Dembo
856-324-5194
adembo@markeim.com

Markeim Chalmers, Inc
1415 Route 70 E Ste 500
Cherry Hill, NJ 08034
856-354-9700
www.markeim.com

