



**Markeim
Chalmers Inc.**
COMMERCIAL REAL ESTATE

FOR SALE

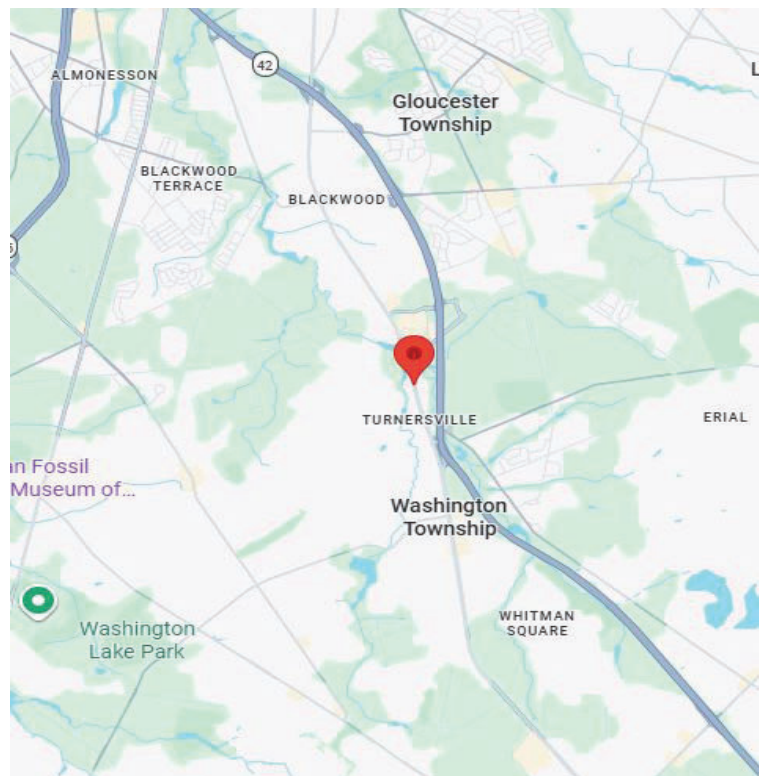
901 ROUTE 168, UNIT 307
TURNERSVILLE, NJ



MEDICAL OFFICE CONDO FOR SALE
5,000+/- SF - \$525,000

PROPERTY HIGHLIGHTS

- Address: Washington Professional Campus
901 Rt. 168, Unit 307
Turnersville, NJ
- Sale Price: \$525,000
- Size: 5,000+/- SF
- Stories: 2
- R.E. Taxes: \$18,749.88/Year
- Condo Fees: \$933/Year
- Ideal for Owner/User or Investment
- Fully fit out medical office condo
- Approximately 1 mile to Rt. 42/AC Expressway entrance
- Minutes from I-295 and Rt. 55



ADAM DEMBO
VICE PRESIDENT

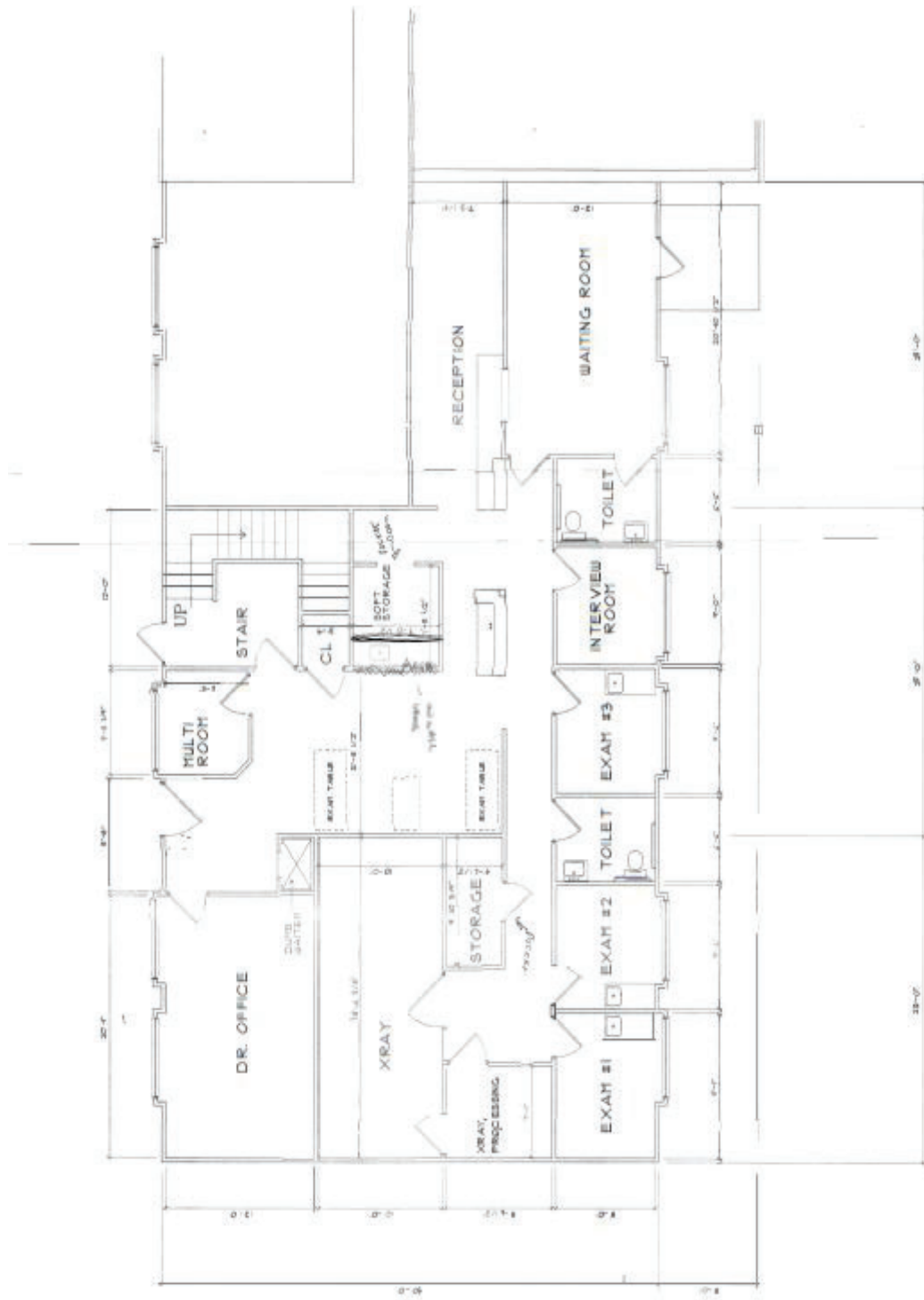
D: (856) 324-5194
E: ADEMBO@MARKEIM.COM

FRED BERLINSKY
PRESIDENT

D: (856) 324-5190
E: FBERLINSKY@MARKEIM.COM

WWW.MARKEIM.COM
1415 ROUTE 70 EAST, SUITE 500
CHERRY HILL, NJ 08034
(856) 354-9700





FIRST FLOOR PLAN
SCALE: 1/4"=1'-0"

ADAM DEMBO
VICE PRESIDENT
D: (856) 324-5194
E: ADEMBO@MARKEIM.COM

FRED BERLINSKY
PRESIDENT
D: (856) 324-5190
E: FBERLINSKY@MARKEIM.COM

WWW.MARKEIM.COM
1415 ROUTE 70 EAST, SUITE 500
CHERRY HILL, NJ 08034
(856) 354-9700





SECOND FLOOR PLAN

SCALE: 1/4"=1'-0"

ADAM DEMBO
VICE PRESIDENT

D: (856) 324-5194
E: ADEMBO@MARKEIM.COM

FRED BERLINSKY
PRESIDENT

D: (856) 324-5190
E: FBERLINSKY@MARKEIM.COM

WWW.MARKEIM.COM
1415 ROUTE 70 EAST, SUITE 500
CHERRY HILL, NJ 08034
(856) 354-9700

